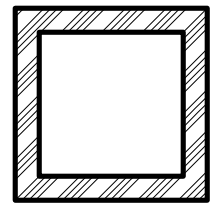
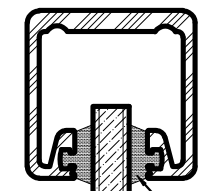


TOP CAP



POST

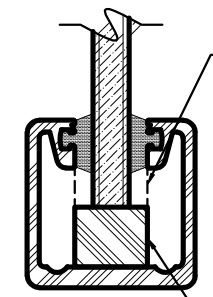


GLASS CHANNEL (TOP)

SEALANT

GLASS PANEL

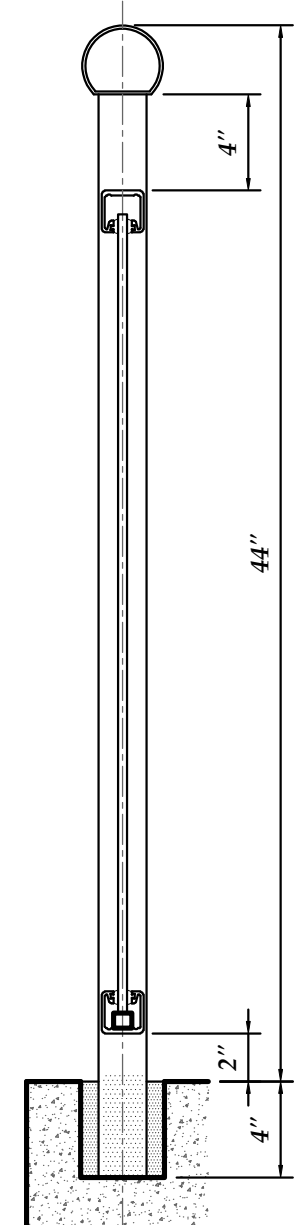
GAP FILLER BEYOND



GLASS CHANNEL (BOTTOM)

SETTING BLOCK

**COMPONENT DETAILS**  
SCALE: 6"=1'-0"



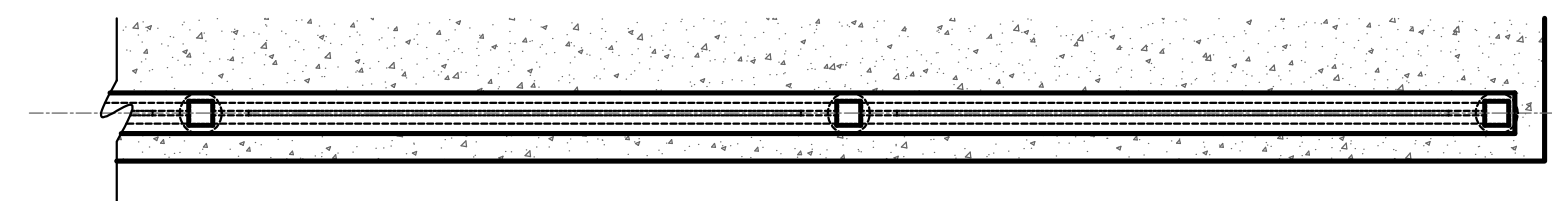
**2**  
**1** **GUARDRAIL SECTION**  
SCALE: 1-1/2"=1'-0"

**COMPONENTS:**

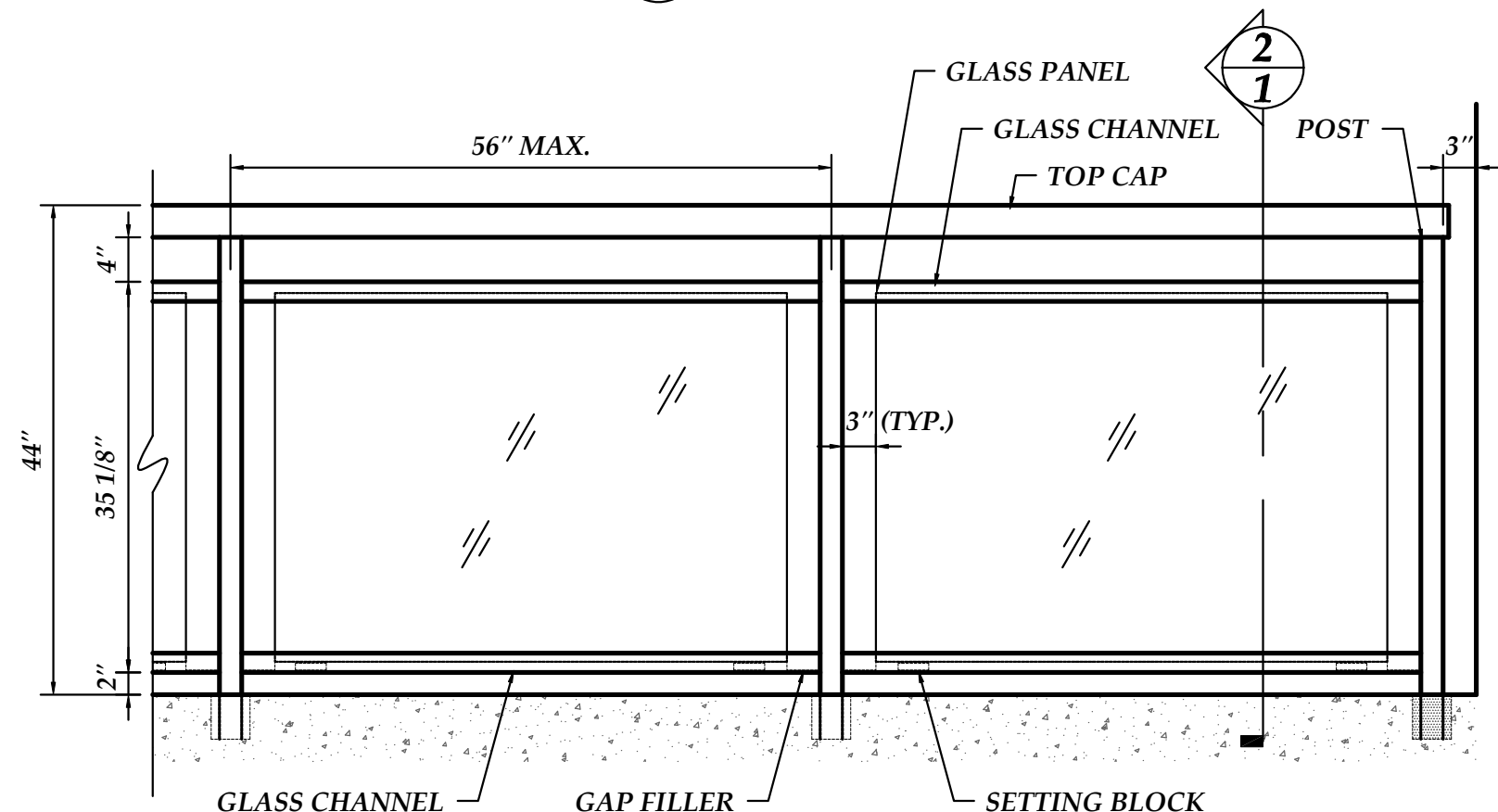
3-3/8"x2-7/8"x1/8"	6063-T52 ALUM.	TOP CAP
2"x2"x1/4"	6061-T6 ALUM.	POST
1-3/4"x1-3/4"x1/8"	6061-T6 ALUM.	GLASS CHANNELS
3/4"x1-1/2"x1/16"	6063-T52 ALUM.	GAP FILLER
1/2"-3/8" TEMPERED	POLISHED SIDES	GLASS
1/2"x3/4"x2"	RUBBER	SETTING BLOCK

**ALTERNATE COMPONENTS:**

4"x2" OVAL	6063-T52 ALUM.	TOP CAP
#133 TYPE	6063-T52 ALUM.	TOP CAP
MAH14	6063-T52 ALUM.	TOP CAP
2-1/4"x1-5/8" LG. DIXIE	6063-T52 ALUM.	TOP CAP




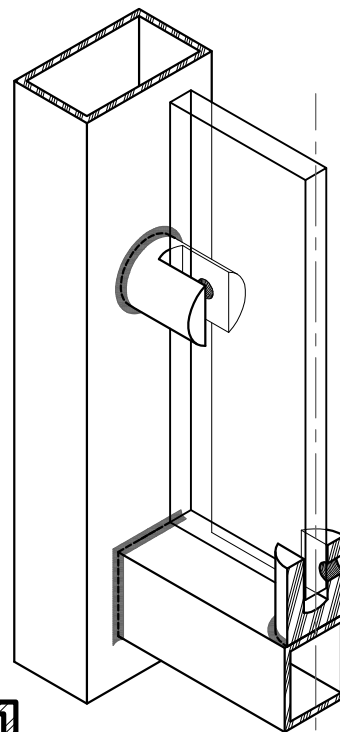
**1**  
**1** **PLAN VIEW**  
SCALE: 3/4"=1'-0"



**2**  
**1** **PARTIAL GUARDRAIL PLAN**  
SCALE: 3/4"=1'-0"

**NOTE:**  
THIS SERIES IS AVAILABLE FOR BOTH  
RESIDENTIAL APPLICATIONS AT 36" AND  
COMMERCIAL APPLICATIONS AT 42" HIGH

Color:	MULLETS ALUMINUM
Revision:	GRS-100
Page:	1
Customer:	MULLETS ALUMINUM
Project Name:	GRS-100
Drawing Description:	TYPICAL DETAILS
Date:	December 10, 2010
Drawn By:	JRB
Scale:	AS NOTED
 <b>MULLETS' ALUMINUM PRODUCTS INC.</b> WELDING FABRICATION DEPT. 905 Ponder Ave. Office # (941) 371-3502 Sarasota, FL 34232 Fax # (941) 378-5676	



**ISOMETRIC SECTION**

SCALE: 3"=1'-0"

**COMPONENTS:**

- |                    |                          |               |
|--------------------|--------------------------|---------------|
| 1-3/4"x3"x1/8"     | 6063-T52 ALUM.           | POST          |
| 1-3/4"x3"x1/4"     | 6061-T6 ALUM.            | POST CAP      |
| 1/2" TEMPERED      | CLEAR w/ POLISHED EDGES  | GLASS PANEL   |
| 1-3/4"x 1-1/2"Ø    | 6061-T6 ALUM. - MACHINED | GLASS BRACKET |
| 1-3/4"x1-3/4"x1/8" | 6063-T52 ALUM.           | BOTTOM RAIL   |

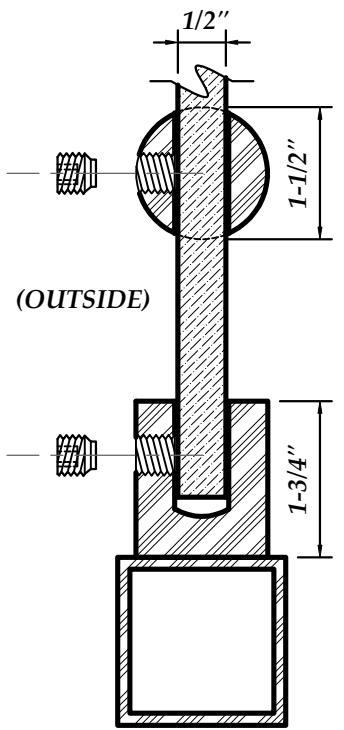
**ALTERNATE COMPONENTS:**

- |            |                |      |
|------------|----------------|------|
| 2"x2"x1/4" | 6063-T52 ALUM. | POST |
|------------|----------------|------|



POST

WALKWAY  
OPEN SIDE



GLASS BRACKET  
w/ 3/8" NYLON TIP  
SET SCREW (SIDE)

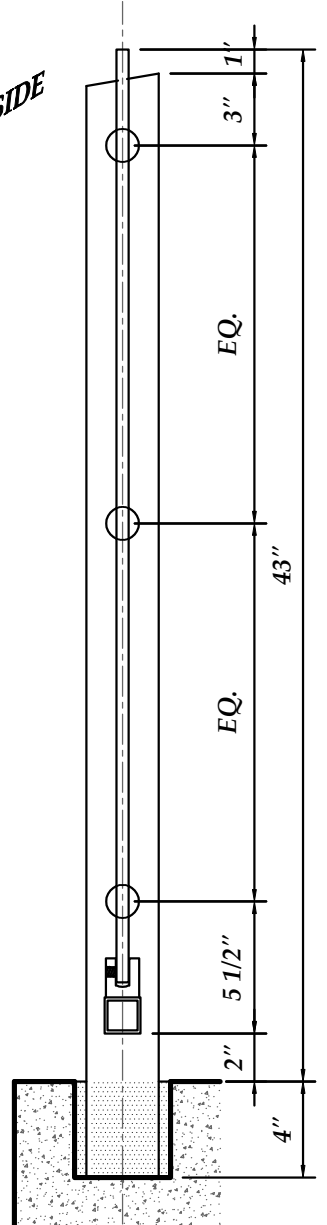
(INSIDE)  
GLASS PANEL

GLASS BRACKET  
w/ 3/8" NYLON TIP  
SET SCREW (BOTTOM)

BOTTOM RAIL

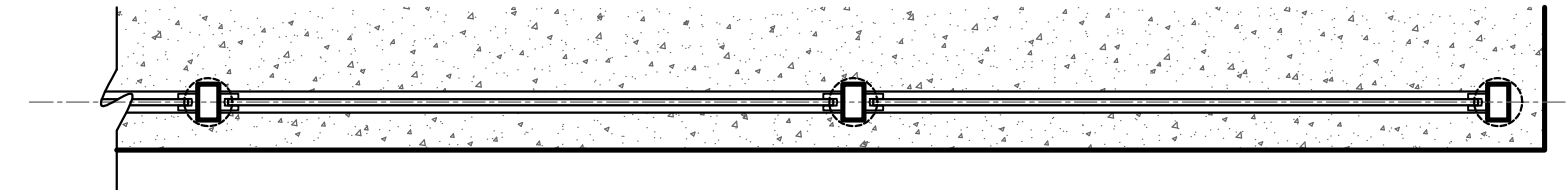
**COMPONENT DETAILS**

SCALE: 6"=1'-0"



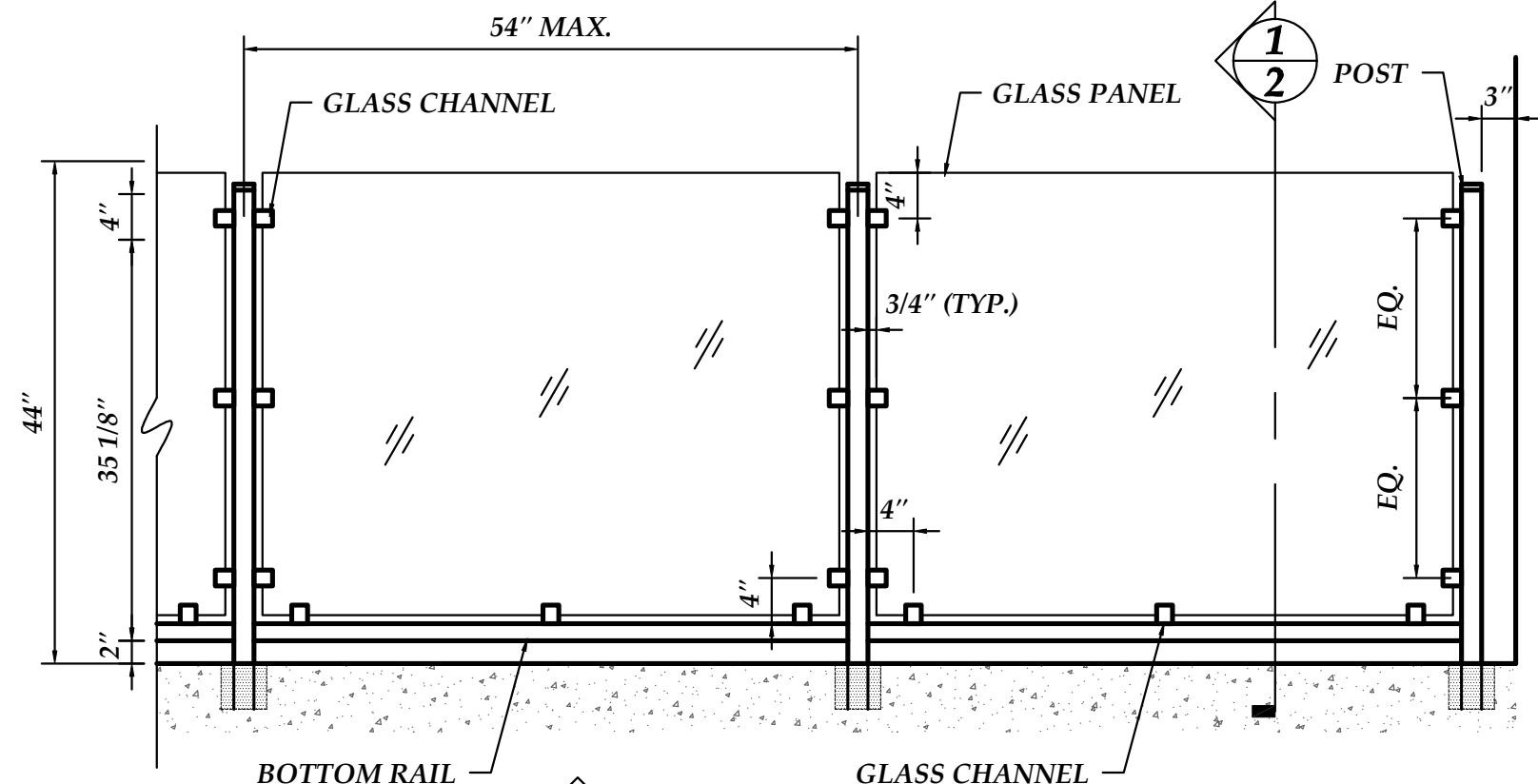
**2 GUARDRAIL SECTION**

SCALE: 1-1/2"=1'-0"



**1 PLAN VIEW**

SCALE: 3/4"=1'-0"



**1 GUARDRAIL ELEVATION**

SCALE: 3/4"=1'-0"

**NOTE:**  
THIS SERIES IS AVAILABLE FOR BOTH  
RESIDENTIAL APPLICATIONS AT 36" AND  
COMMERCIAL APPLICATIONS AT 42" HIGH

Color:

MULLETS ALUMINUM

Date: December 10, 2010



Revision:

GRS-200

Project Name:

Drawn By: JRB

Page:

TYPICAL DETAILS

Drawing Description:

Scale: AS NOTED

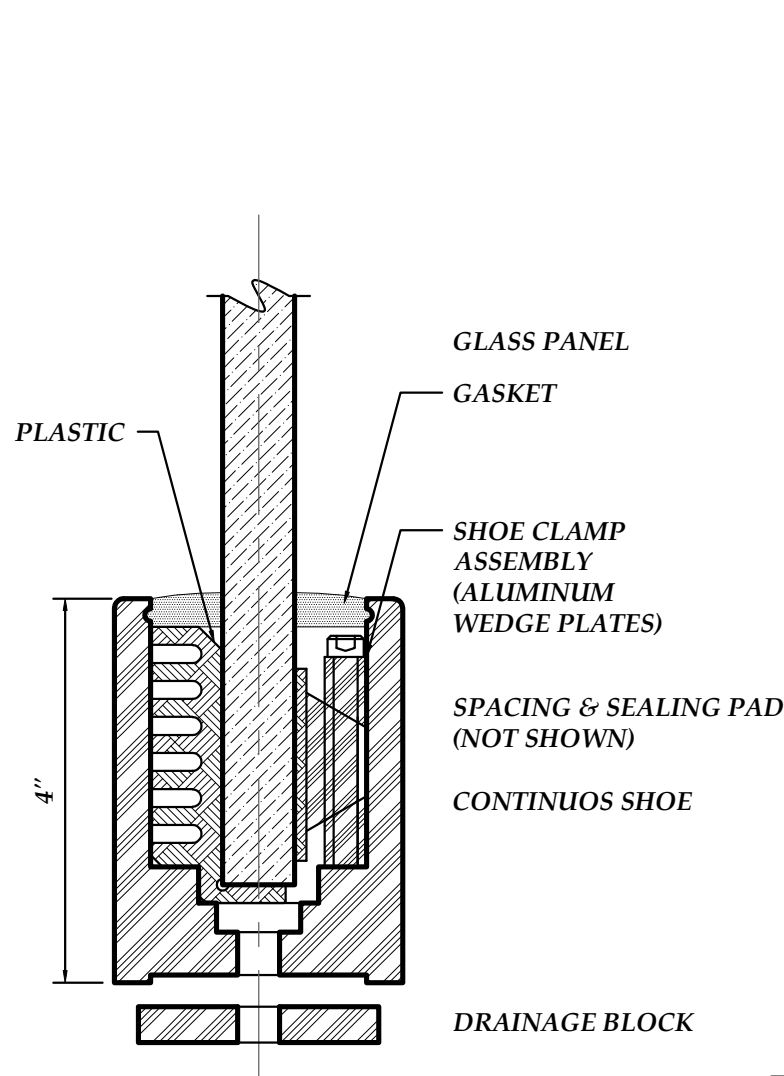
2

**COMPONENTS:**

3/4" TEMPERED	CLEAR w/ POLISHED EDGES	GLASS PANEL
2-3/4"x 4"x3/8"	6061-T6 ALUM. - MILL FINISHED	CONTINUOS SHOE
2-1/4"x 2-1/2"x 3/8"	6061-T6 ALUM. - BLACK	DRAIN BLOCK
N/A	6061-T6 ALUM. / PLASTIC	SHOE CLAMP ASSEMBLY
3/4"x 9/16"	RUBBER - BLACK	GASKET
1/4"x 3-7/16"	HIGH DENSITY FOAM	SPACING & SEALING PAD

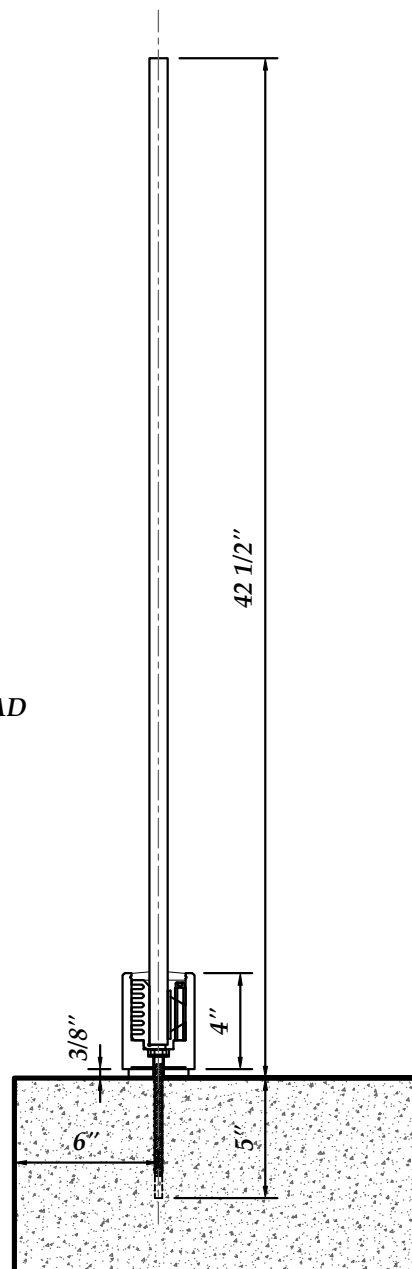
**ALTERNATE COMPONENTS:**

2" DIA.	6063-T52 ALUM.	TOP CAP
1-1/2" DIA. & BRACKETS AT C/L OF GLASS PANELS		

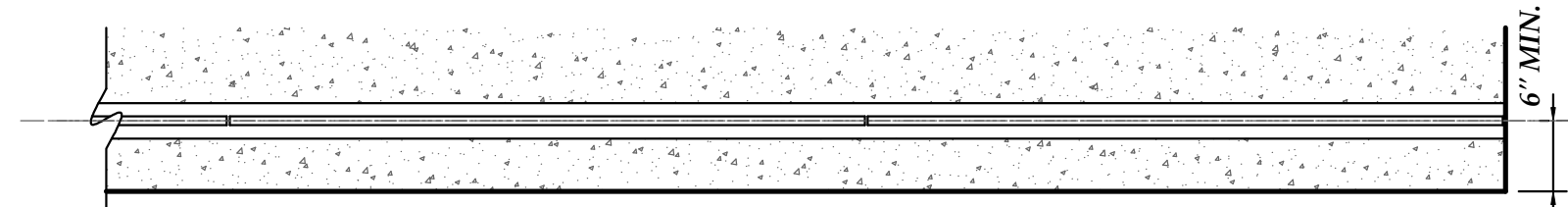


**COMPONENT DETAILS**

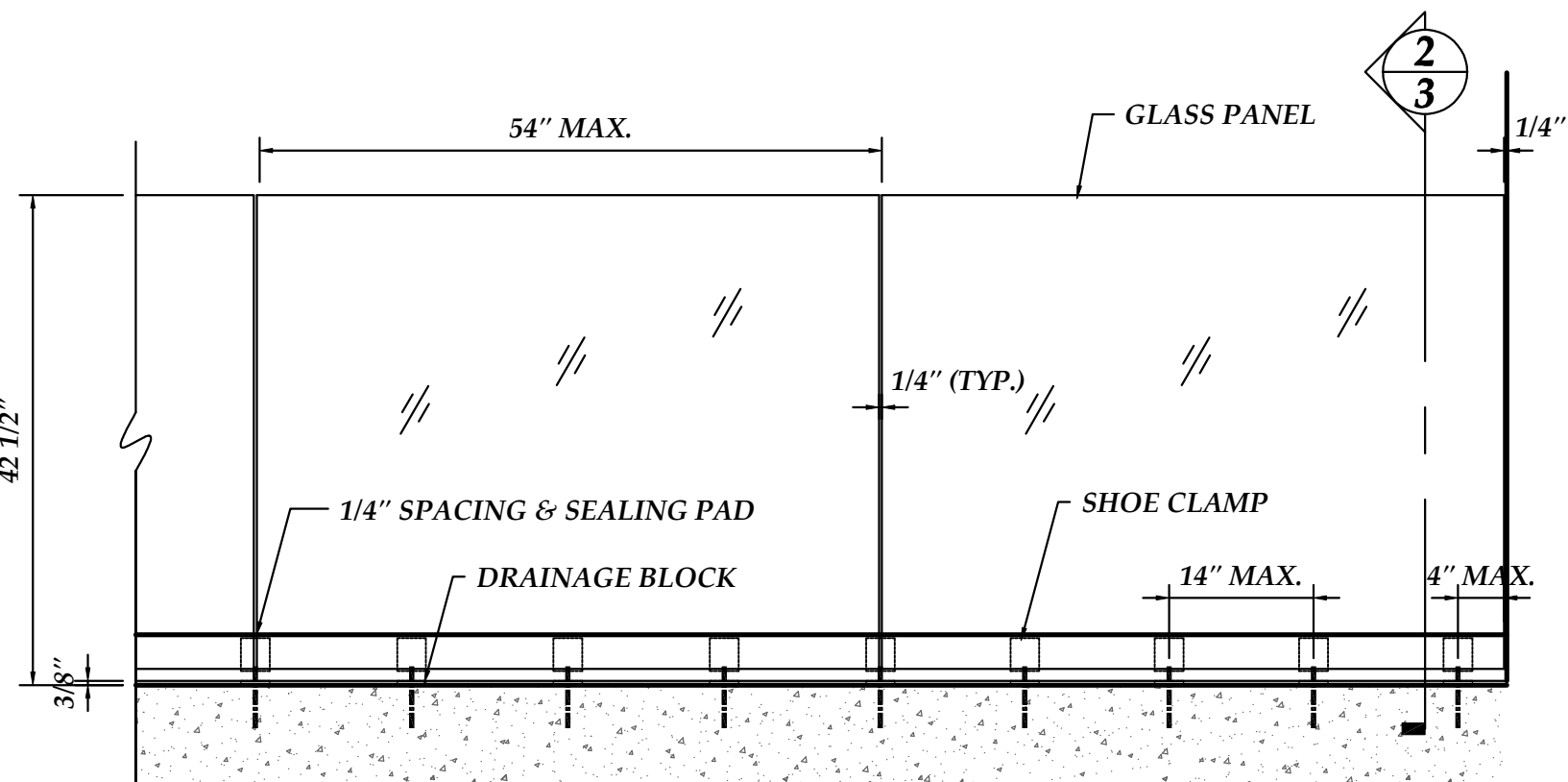
SCALE: 6"=1'-0"



**2** **GUARDRAIL SECTION**  
SCALE: 1-1/2"=1'-0"



**1** **PLAN VIEW**  
SCALE: 3/4"=1'-0"



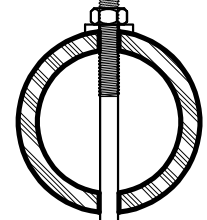
**1** **GUARDRAIL ELEVATION**  
SCALE: 3/4"=1'-0"

**NOTE:**  
THIS SERIES IS AVAILABLE FOR BOTH  
RESIDENTIAL APPLICATIONS AT 36" AND  
COMMERCIAL APPLICATIONS AT 42" HIGH

Color:	Revision:	Page:
MULLETS ALUMINUM	GRS-300	3
Customer:	Project Name:	Drawing Description:
December 10, 2010	JRB	TYPICAL DETAILS
Date:	Drawn By:	Scale:
December 10, 2010	JRB	AS NOTED

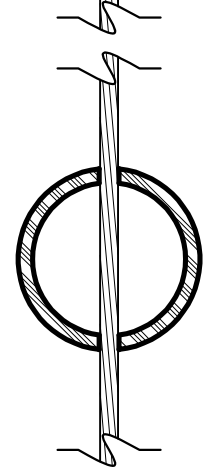
**MULLETS' ALUMINUM PRODUCTS INC.**  
WELDING FABRICATION DEPT.  
905 Ponder Ave. Office # (941) 371-3502  
Sarasota, FL 34232 Fax # (941) 378-5676

TRIM ENDS &  
GRIND TO FINISH

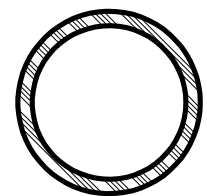


END POST

CABLE ASSEMBLY



TOP RAIL & INFIL  
POST

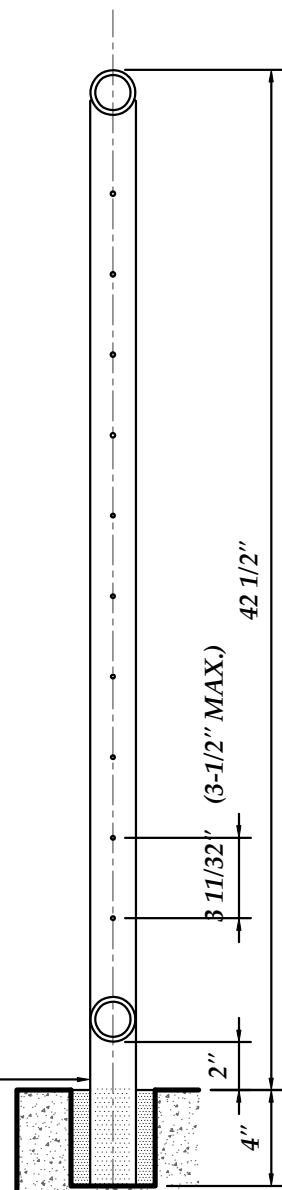


BOTTOM RAIL

**COMPONENT DETAILS**

SCALE: 6"=1'-0"

PROVIDE 1/4" WEEP DRAIN  
LOCATED 1/4" ABOVE FINISHED  
SURFACE (TYP AT EA. POST)



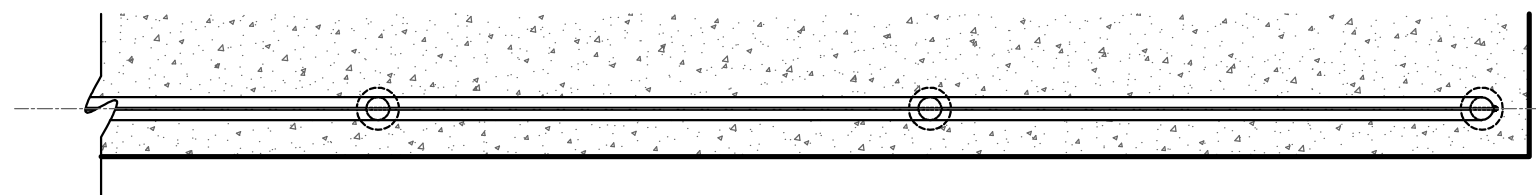
**2**  
**4** **GUARDRAIL SECTION**  
SCALE: 1-1/2"=1'-0"

**COMPONENTS:**

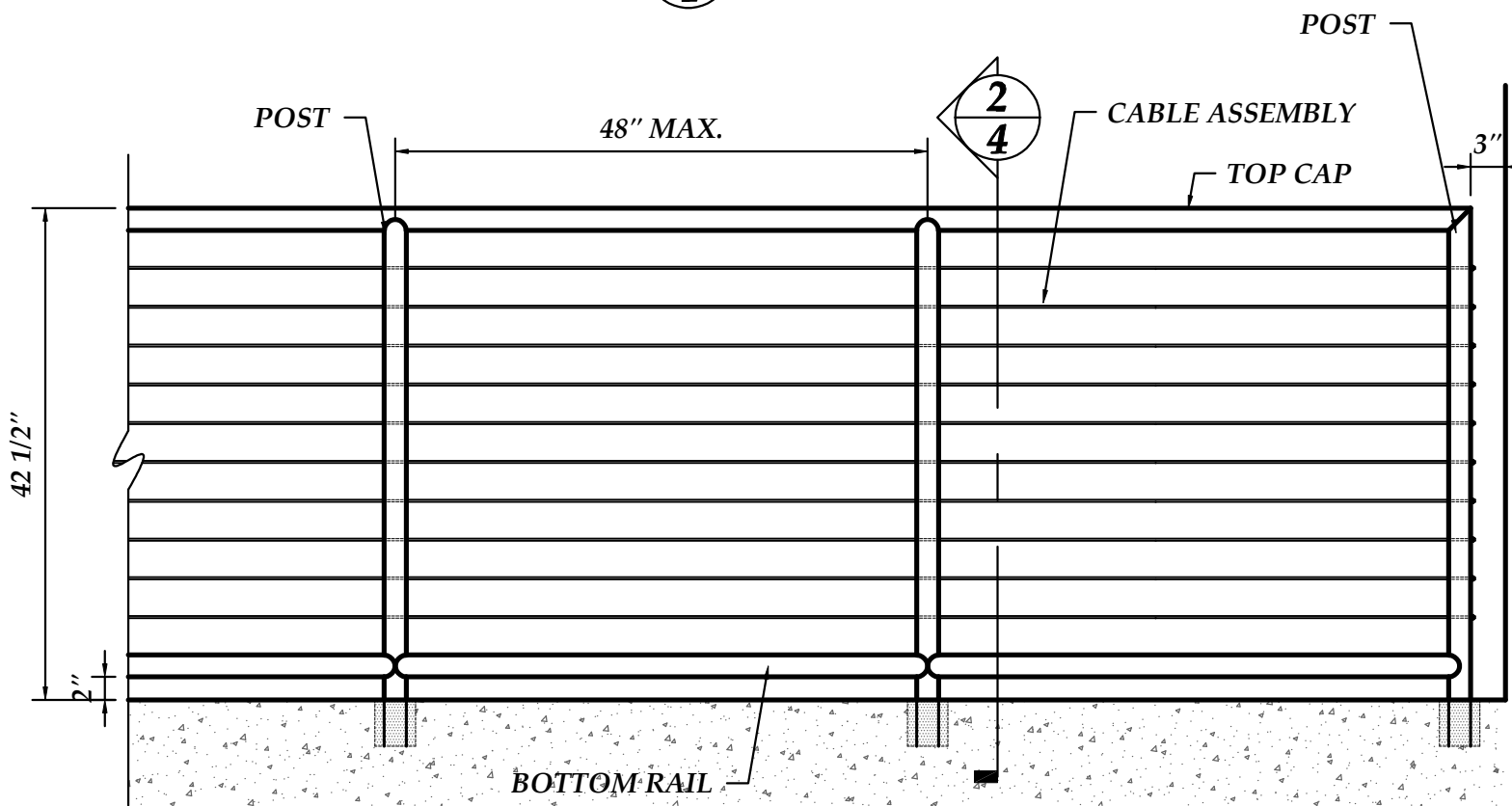
1-1/2" SCH. 40  
1-1/2" SCH. 80  
1-1/2" SCH. 40  
3/16" 6x7

1-7/8 OD. 6061-T6 ALUM.  
1-7/8 OD. 6061-T6 ALUM.  
1-7/8 OD. 6061-T6 ALUM.  
316 S.S. (JAKOB INC.)

TOP CAP  
POST  
BOTTOM RAIL  
CABLE RAIL SYSTEM



**1**  
**4** **PLAN VIEW**  
SCALE: 3/4"=1'-0"



**1**  
**4** **GUARDRAIL ELEVATION**  
SCALE: 3/4"=1'-0"

Color:

MULLETS ALUMINUM

Customer:

Date: December 10, 2010



Revision:

CRS-100

Project Name:

Drawn By: JRB

WELDING FABRICATION DEPT.  
905 Ponder Ave. Office # (941) 371-3502  
Sarasota, FL 34232 Fax # (941) 378-5676

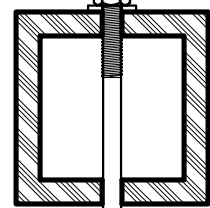
Page:

TYPICAL DETAILS

Drawing Description:

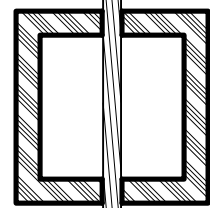
Scale: AS NOTED

TRIM ENDS &  
GRIND TO FINISH

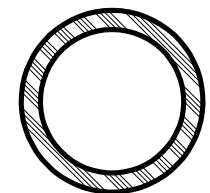


END POST

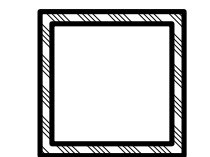
CABLE ASSEMBLY



INFIL POST



TOP RAIL

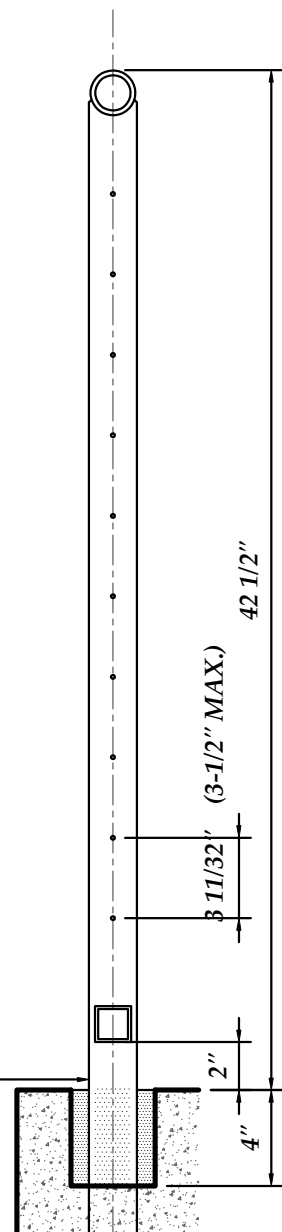


BOTTOM RAIL

**COMPONENT DETAILS**

SCALE: 6"=1'-0"

PROVIDE 1/4" WEEP DRAIN  
LOCATED 1/4" ABOVE FINISHED  
SURFACE (TYP AT EA. POST)



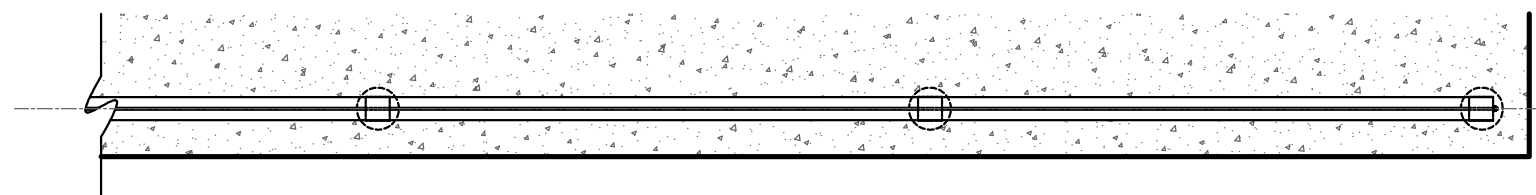
**2**  
**5** **GUARDRAIL SECTION**  
SCALE: 1-1/2"=1'-0"

**COMPONENTS:**

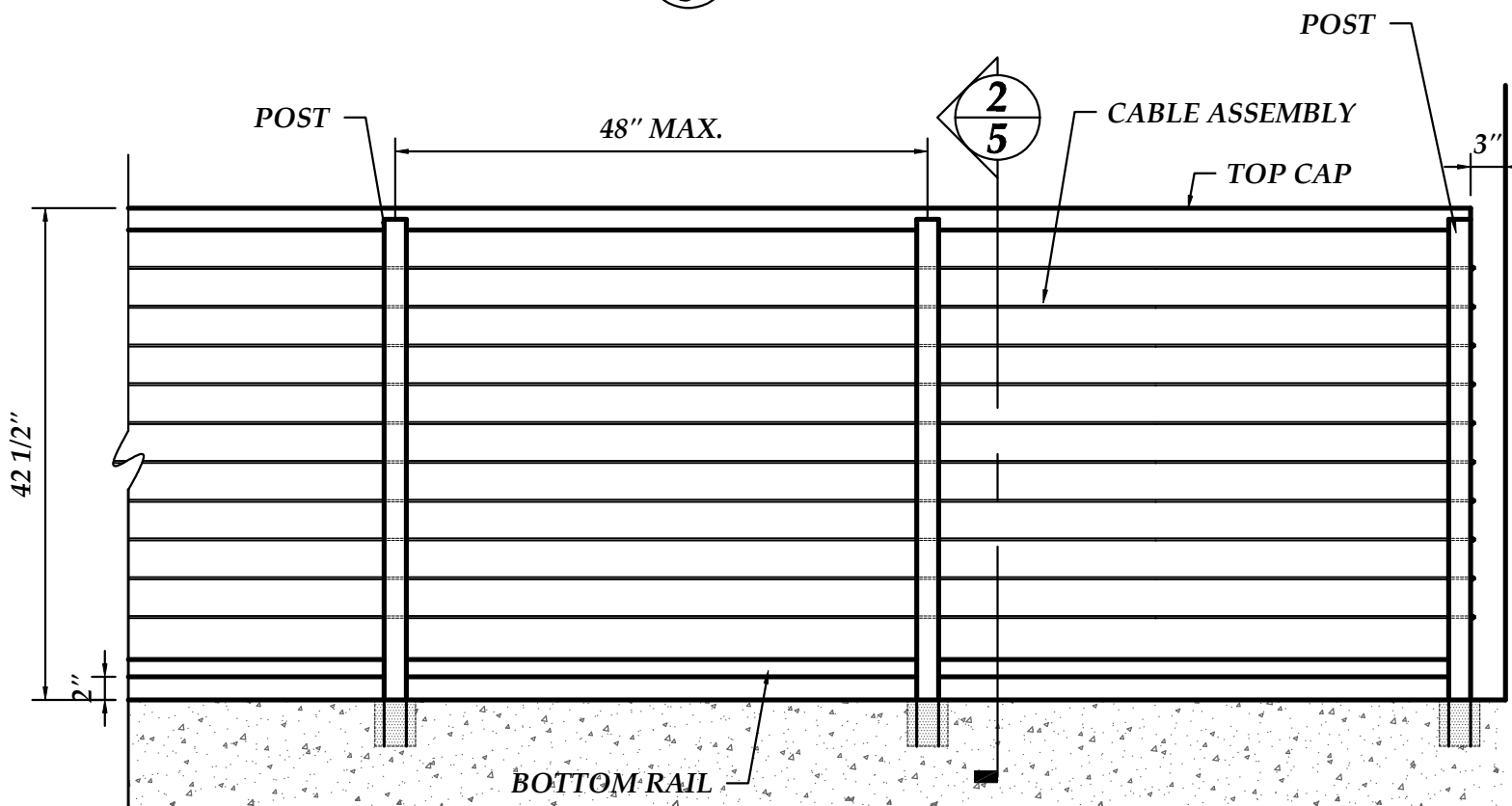
1-1/2" SCH. 40  
2"x2"x1/4"  
1-1/2"x1-1/2"x1/8"  
3/16" 6x7

1-7/8 OD. 6061-T6 ALUM.  
6061-T6 ALUM.  
6061-T6 ALUM.  
316 S.S. (JAKOB INC.)

TOP CAP  
END / CORNER POSTS  
BOTTOM RAIL  
CABLE RAIL SYSTEM



**1**  
**5** **PLAN VIEW**  
SCALE: 3/4"=1'-0"



**1**  
**5** **GUARDRAIL ELEVATION**  
SCALE: 3/4"=1'-0"

Color:

MULLETS ALUMINUM

Customer:

Date: December 10, 2010



Revision:

CRS-200

Project Name:

Drawn By: JRB

Page:

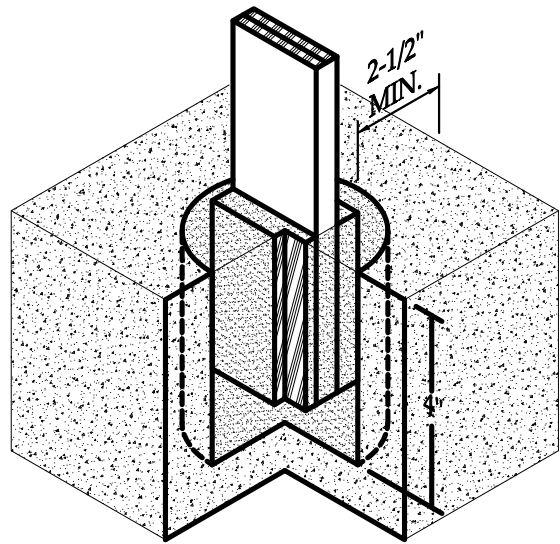
TYPICAL DETAILS

Drawing Description:

Scale: AS NOTED

5

WELDING FABRICATION DEPT.  
905 Ponder Ave. Office # (941) 371-3502  
Sarasota, FL. 34232 Fax # (941) 378-5676



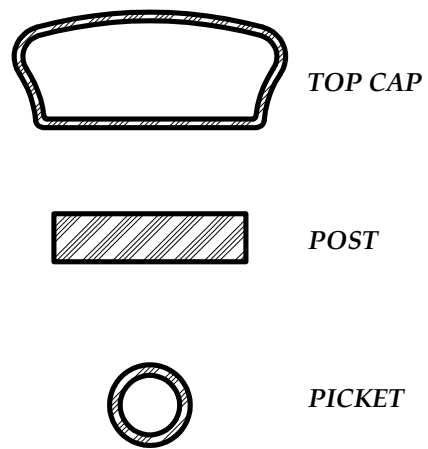
**COMPONENT DETAILS**  
SCALE: 6"=1'-0"

**COMPONENTS:**

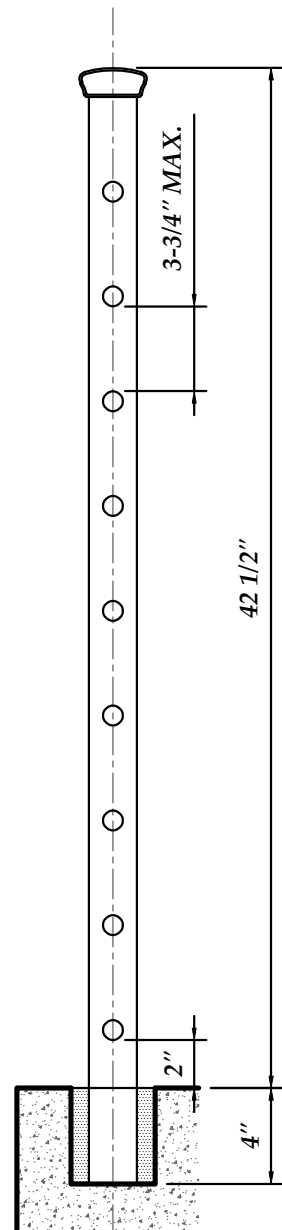
#133 TYPE	6063-T52 ALUM.	TOP CAP
2" x 1/2"	6061-T6 ALUM.	POST
1/2" SCH. 40	6061-T6 ALUM.	PICKET

**ALTERNATE COMPONENTS:**

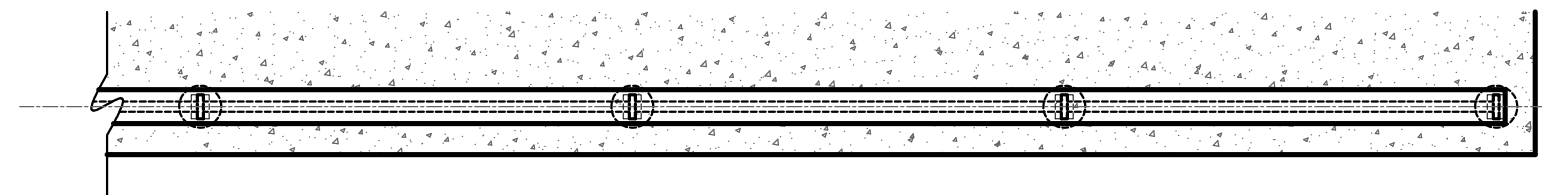
5/8" SOLID BAR	6061-T6 ALUM.	PICKET
----------------	---------------	--------



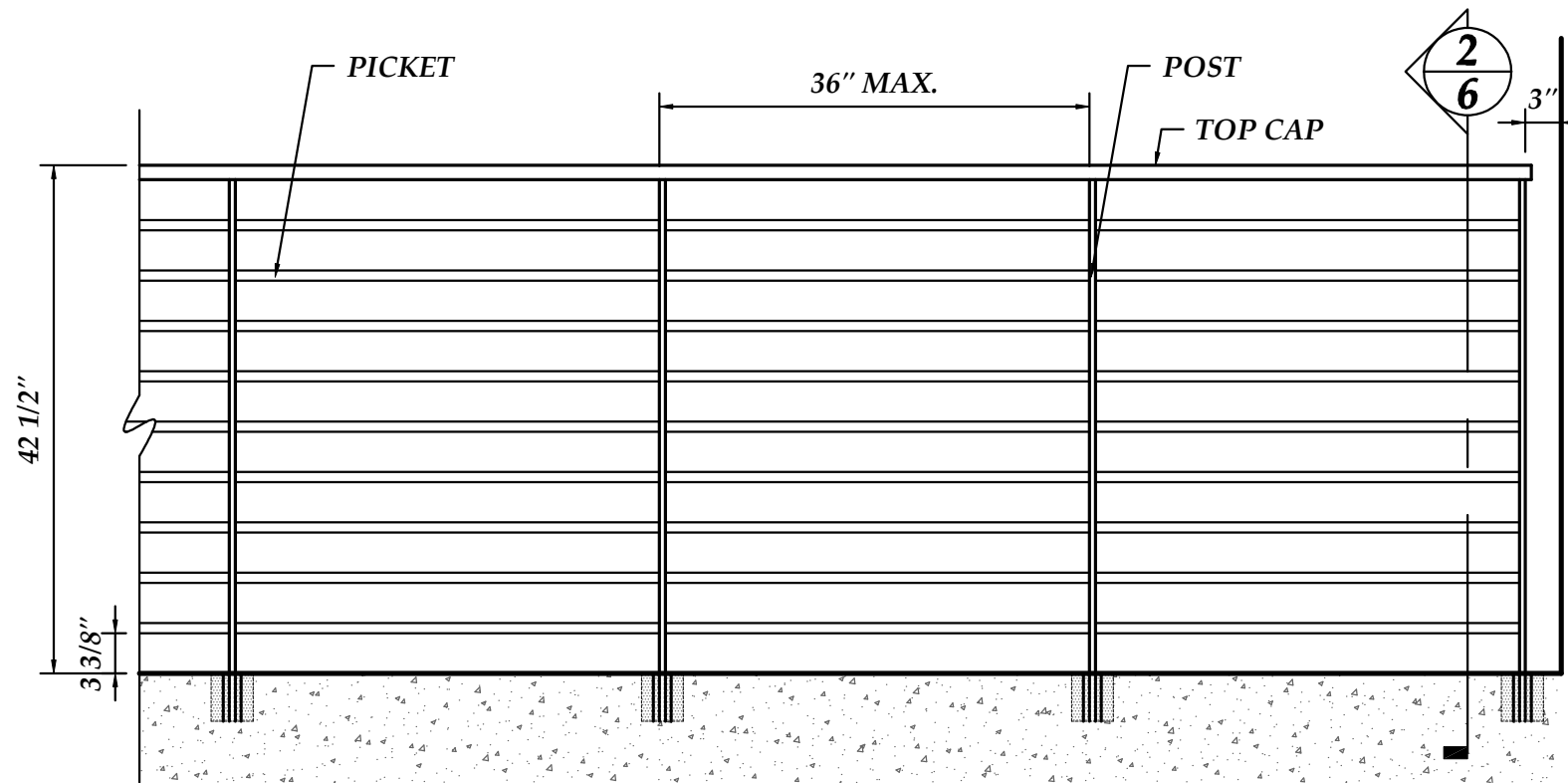
**COMPONENT DETAILS**  
SCALE: 6"=1'-0"



**2**  
**6** **GUARDRAIL SECTION**  
SCALE: 1-1/2"=1'-0"



**1**  
**6** **PLAN VIEW**  
SCALE: 3/4"=1'-0"



**1**  
**6** **GUARDRAIL ELEVATION**  
SCALE: 3/4"=1'-0"

**NOTE:**  
THIS SERIES IS AVAILABLE FOR BOTH  
RESIDENTIAL APPLICATIONS AT 36" AND  
COMMERCIAL APPLICATIONS AT 42" HIGH

Color: **MULLETS ALUMINUM**  
Revision: **HRS-100**  
Page: **6**

Date: **December 10, 2010**  
Drawn By: **JRB**  
Scale: **AS NOTED**

**MULLET'S**  
**ALUMINUM**  
**PRODUCTS INC.**  
WELDING FABRICATION DEPT.  
905 Ponder Ave.  
Sarasota, FL. 34232  
Office # (941) 371-3502  
Fax # (941) 378-5676

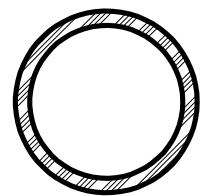
Drawing Description: **TYPICAL DETAILS**

**COMPONENTS:**

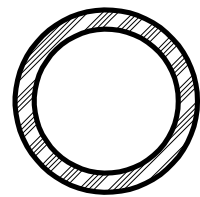
1-1/2" SCH. 40	1-7/8" OD. 6061-T6 ALUM.	TOP CAP
1-1/2" SCH. 80	1-7/8" OD. 6061-T6 ALUM.	POST
3/4" SCH. 40	1-1/6" OD. 6061-T6 ALUM.	PICKET

**ALTERNATE COMPONENTS:**

1-1/2" SCH. 40	1-7/8" OD. 6061-T6 ALUM.	PICKET
----------------	--------------------------	--------



TOP CAP



POST

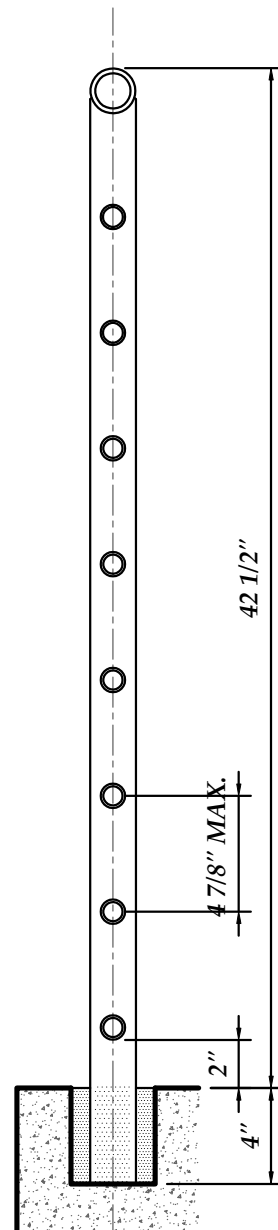


PICKET

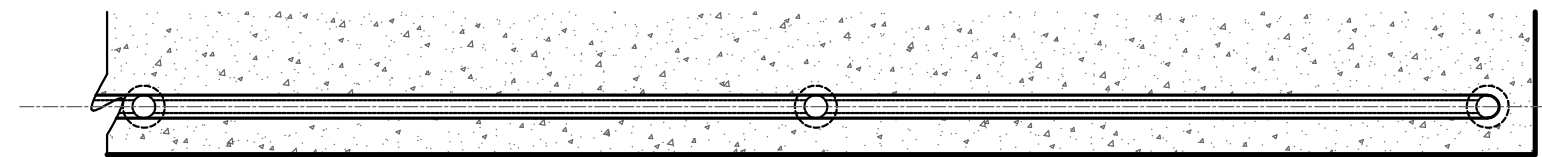
**COMPONENT DETAILS**

SCALE: 6"=1'-0"

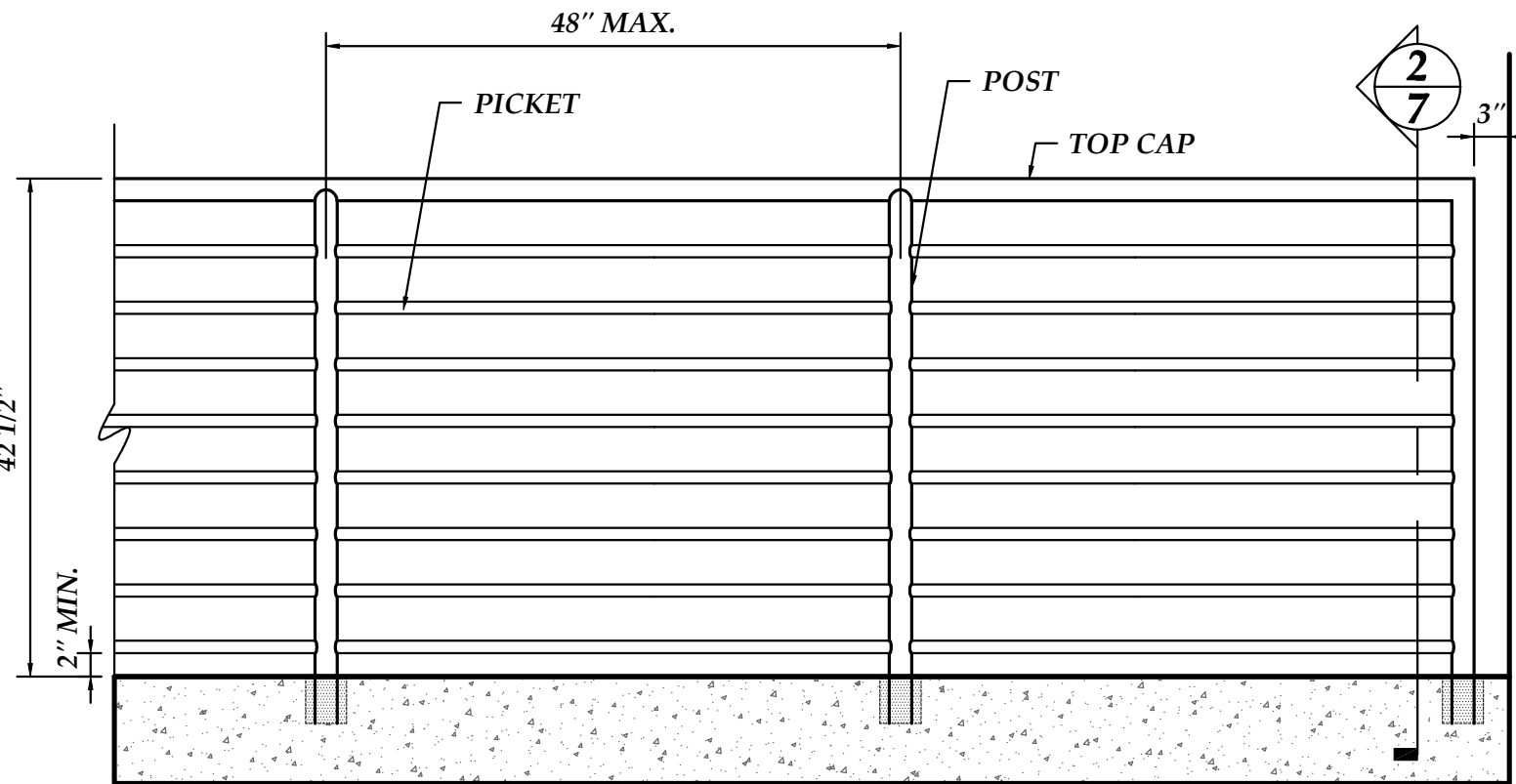
**NOTE:**  
THIS SERIES IS AVAILABLE FOR BOTH  
RESIDENTIAL APPLICATIONS AT 36" AND  
COMMERCIAL APPLICATIONS AT 42" HIGH



**2**  
**7** **GUARDRAIL SECTION**  
SCALE: 1-1/2"=1'-0"



**1**  
**7** **PLAN VIEW**  
SCALE: 3/4"=1'-0"



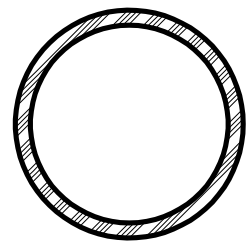
**1**  
**7** **GUARDRAIL ELEVATION**  
SCALE: 3/4"=1'-0"

Color:	MULLETS ALUMINUM
Revision:	HRS-200
Page:	7
Customer:	TYPICAL DETAILS
Date:	December 10, 2010
Drawn By:	JRB
Scale:	AS NOTED
Project Name:	HRS-200
Drawing Description:	TYPICAL DETAILS

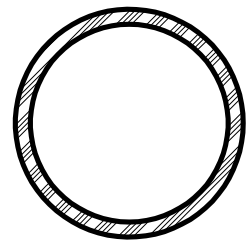
**MULLET'S**  
**ALUMINUM**  
**PRODUCTS INC.**  
WELDING FABRICATION DEPT.  
905 Ponder Ave. Office # (941) 371-3502  
Sarasota, FL. 34232 Fax # (941) 378-5676

**COMPONENTS:**

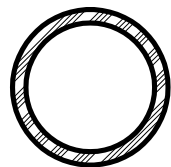
2" SCH. 40	2-3/8" OD. 6061-T6 ALUM.	TOP CAP
2" SCH. 40	2-3/8" OD. 6061-T6 ALUM.	POST
1-1/4" SCH. 40	1-5/8" OD. 6061-T6 ALUM.	PICKET



TOP CAP



POST

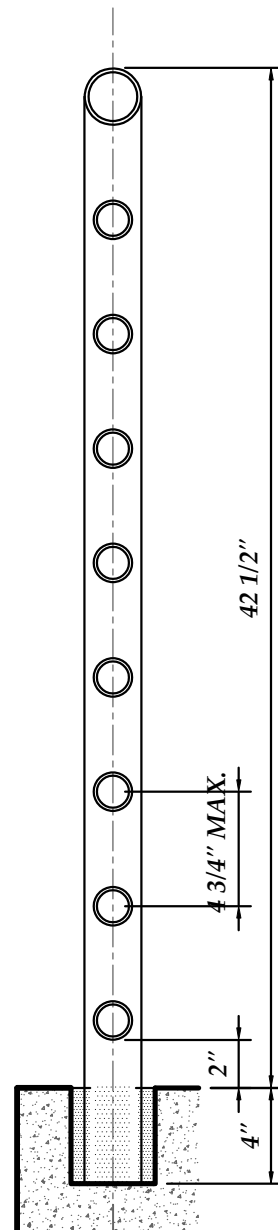


PICKET

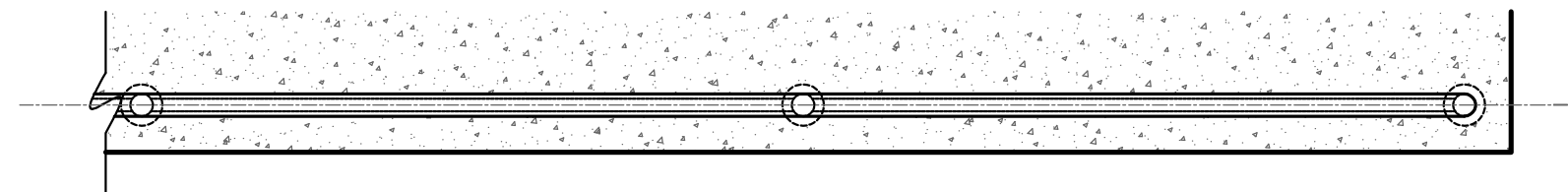
**COMPONENT DETAILS**

SCALE: 6"=1'-0"

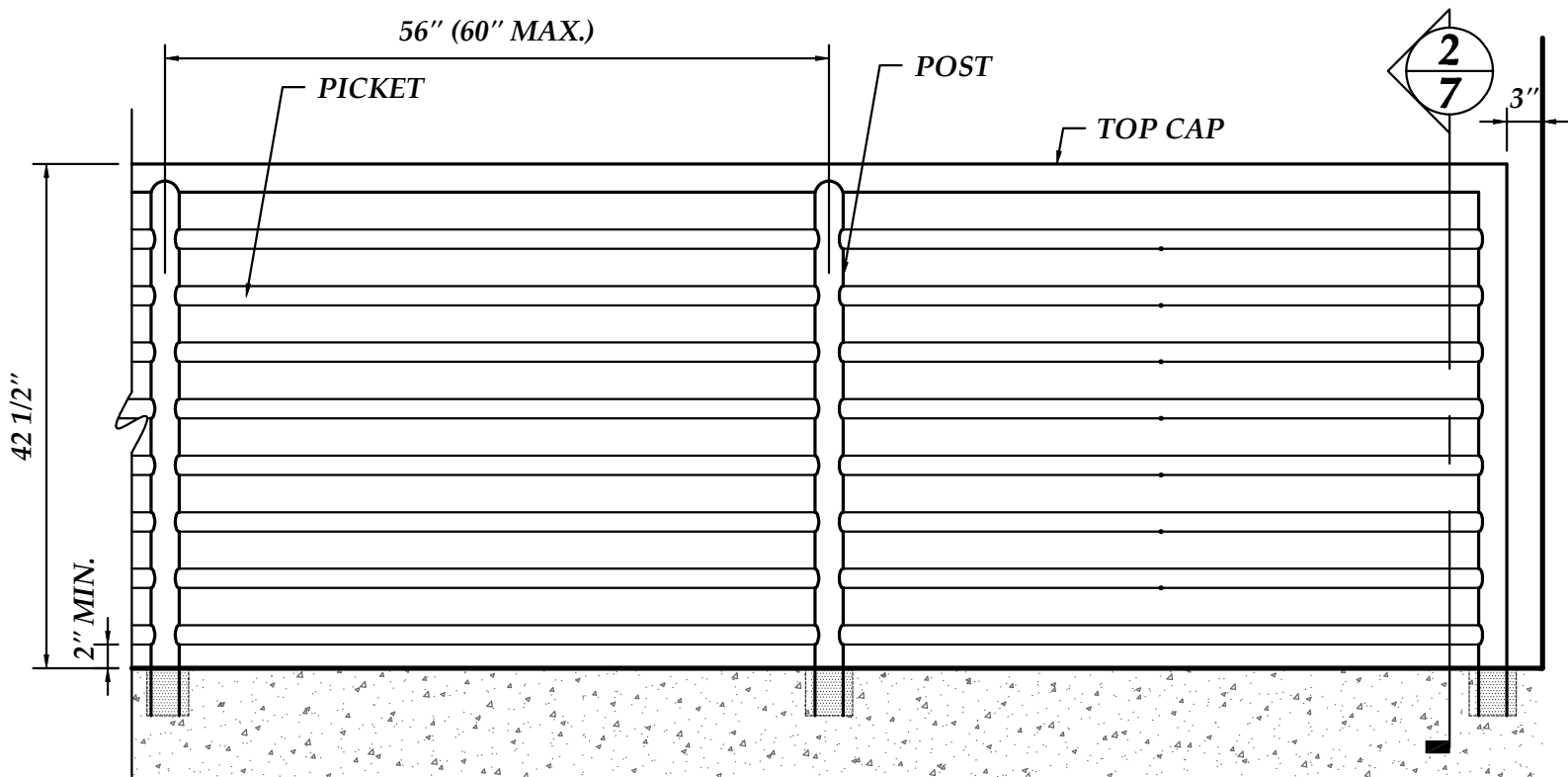
**NOTE:**  
THIS SERIES IS AVAILABLE FOR BOTH  
RESIDENTIAL APPLICATIONS AT 36" AND  
COMMERCIAL APPLICATIONS AT 42" HIGH



**2**  
**7** **GUARDRAIL SECTION**  
SCALE: 1-1/2"=1'-0"



**1**  
**7** **PLAN VIEW**  
SCALE: 3/4"=1'-0"



**1**  
**7** **GUARDRAIL ELEVATION**  
SCALE: 3/4"=1'-0"

Color:

MULLETS ALUMINUM

Customer:

Date: December 10, 2010

**MULLETS**  
**ALUMINUM**  
**PRODUCTS INC.**  
WELDING FABRICATION DEPT.  
905 Ponder Ave. Office # (941) 371-3502  
Sarasota, FL 34232 Fax # (941) 378-5676

Revision:

HRS-300

Project Name:

Drawn By: JRB

Page:

TYPICAL DETAILS

Drawing Description:

Scale: AS NOTED

**COMPONENTS:**

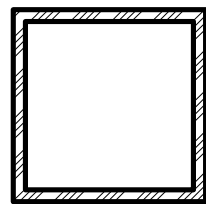
1"x2"x1/8" (RADIUS)	6061-T6 ALUM.	TOP CAP
2"x2"x1/8"	6061-T6 ALUM.	POST
3/4"x1.5"x1/8"	6061-T6 ALUM.	PICKET

**ALTERNATE COMPONENTS:**

1"x1"x1/8"	6061-T6 ALUM. ROTATED 45°	PICKET
#133 TYPE	6063-T52 ALUM.	TOP CAP



TOP CAP



POST

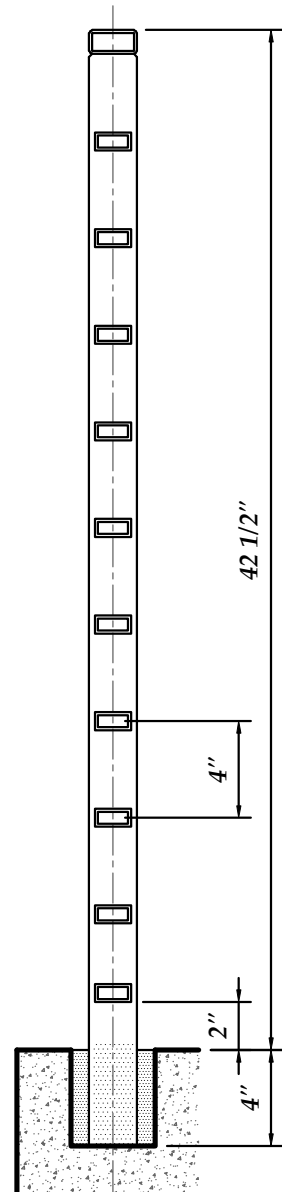


PICKET

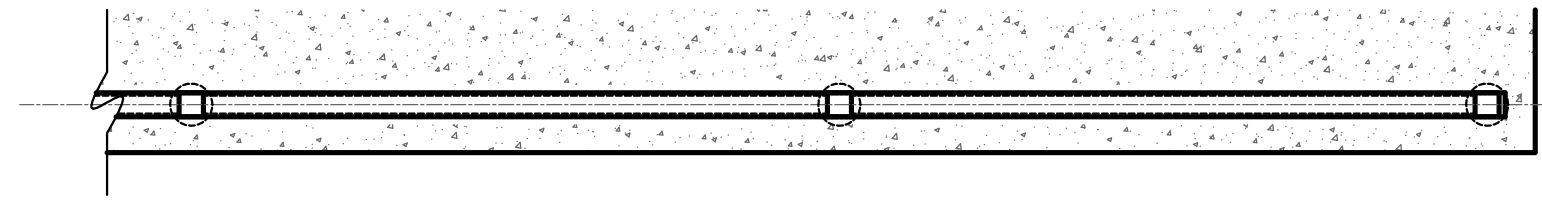
**COMPONENT DETAILS**

SCALE: 6"=1'-0"

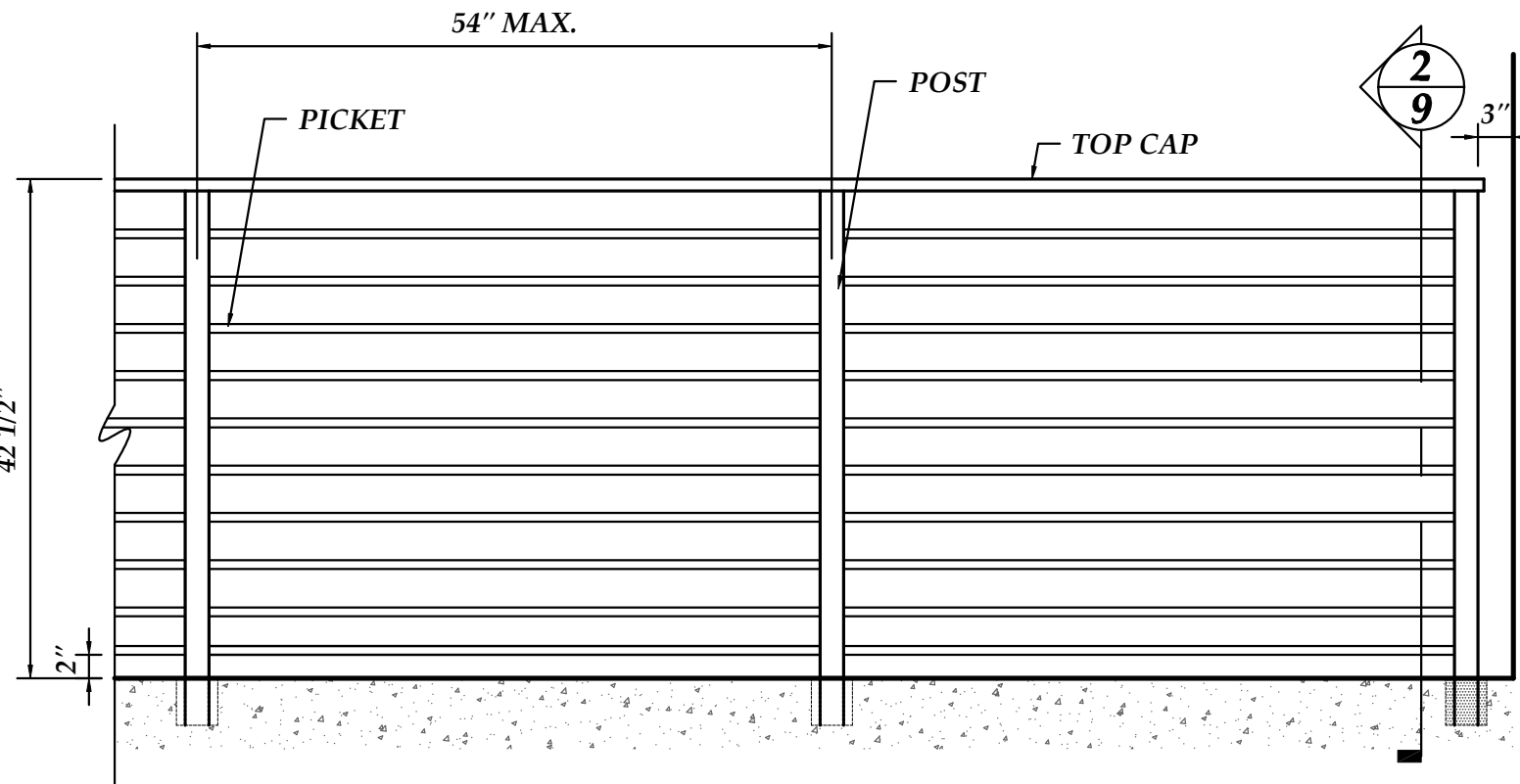
**NOTE:**  
THIS SERIES IS AVAILABLE FOR BOTH  
RESIDENTIAL APPLICATIONS AT 36" AND  
COMMERCIAL APPLICATIONS AT 42" HIGH



**2**  
**9** **GUARDRAIL SECTION**  
SCALE: 1-1/2"=1'-0"



**1**  
**9** **PLAN VIEW**  
SCALE: 3/4"=1'-0"



**1**  
**9** **GUARDRAIL ELEVATION**  
SCALE: 3/4"=1'-0"

Color:

MULLETS ALUMINUM

Date: December 10, 2010

**MULLETS' ALUMINUM PRODUCTS INC.**  
WELDING FABRICATION DEPT.  
905 Ponder Ave. Office # (941) 371-3502  
Sarasota, FL 34232 Fax # (941) 378-5676

Revision:

HRS-400

Drawn By: JRB

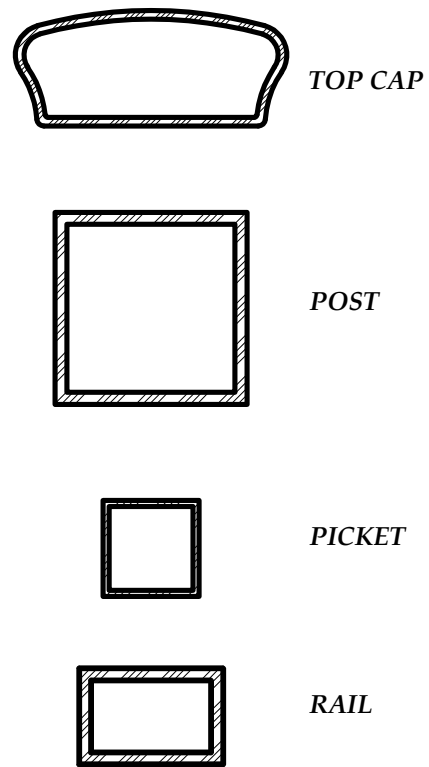
Page:

TYPICAL DETAILS

Scale: AS NOTED

**COMPONENTS:**

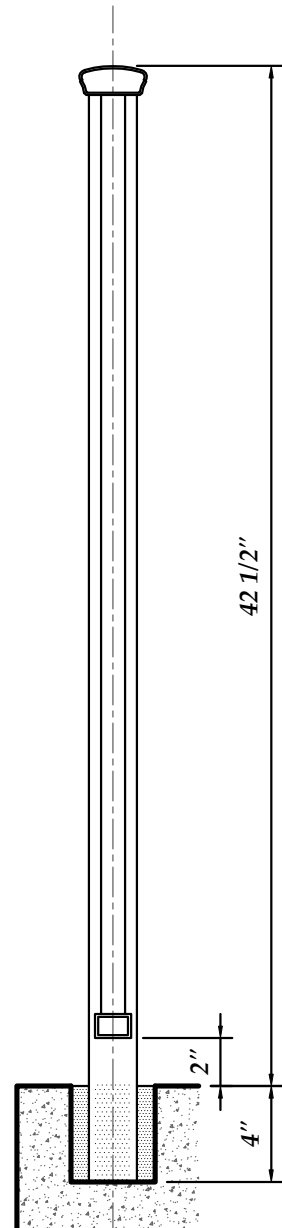
#133 TYPE	6063-T52 ALUM.	TOP CAP
2" x 2" x 1/8"	6061-T6 ALUM.	POST
1" x 1" x 1/16"	6061-T6 ALUM.	PICKET
1" x 1-1/2" x 1/18"	6061-T6 ALUM.	RAIL



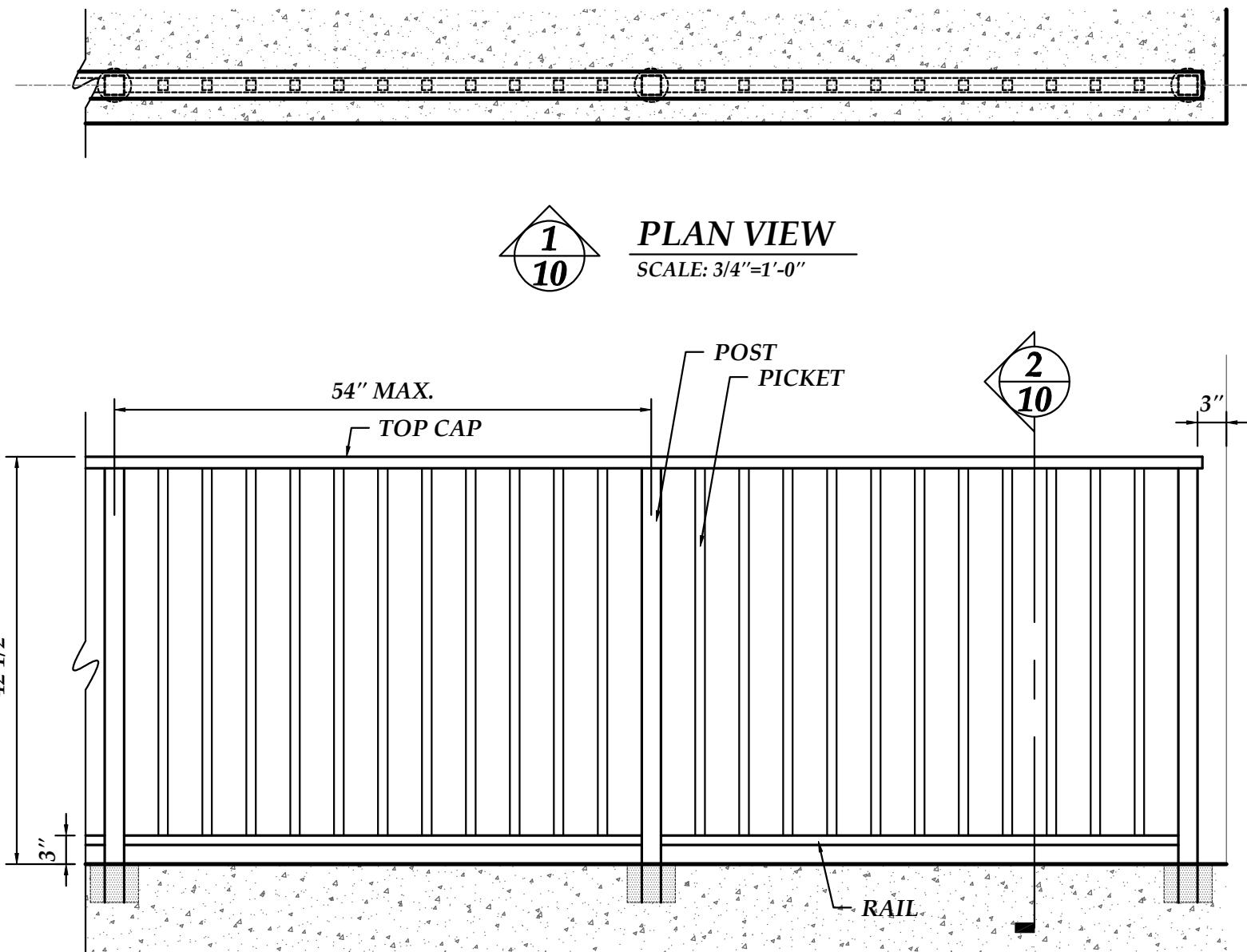
**COMPONENT DETAILS**

SCALE: 6"=1'-0"

**NOTE:**  
THIS SERIES IS AVAILABLE FOR BOTH  
RESIDENTIAL APPLICATIONS AT 36" AND  
COMMERCIAL APPLICATIONS AT 42" HIGH



**2**  
**10** **GUARDRAIL SECTION**  
SCALE: 1-1/2"=1'-0"



**1**  
**10** **GUARDRAIL ELEVATION**  
SCALE: 3/4"=1'-0"

**1**  
**10** **PLAN VIEW**  
SCALE: 3/4"=1'-0"

Color:

MULLETS ALUMINUM

Customer:

Date: December 10, 2010

**MULLET'S**  
**ALUMINUM**  
**PRODUCTS INC.**  
WELDING FABRICATION DEPT.  
905 Ponder Ave. Office # (941) 371-3502  
Sarasota, FL 34232 Fax # (941) 378-5676

Revision:

VRS-100

Project Name:

Drawn By: JRB

Page:

TYPICAL DETAILS

Drawing Description:

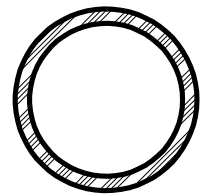
Scale: AS NOTED

**COMPONENTS:**

#133 TYPE	6063-T52 ALUM.	TOP CAP
1-1/2" SCH. 80	1-7/8" OD. 6061-T6 ALUM.	POST
3/4" SCH. 40	1-1/6" OD. 6061-T6 ALUM.	PICKET
1" x 1-1/2" x 1/18"	6061-T6 ALUM.	RAIL



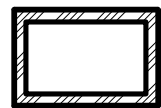
TOP CAP



POST



PICKET

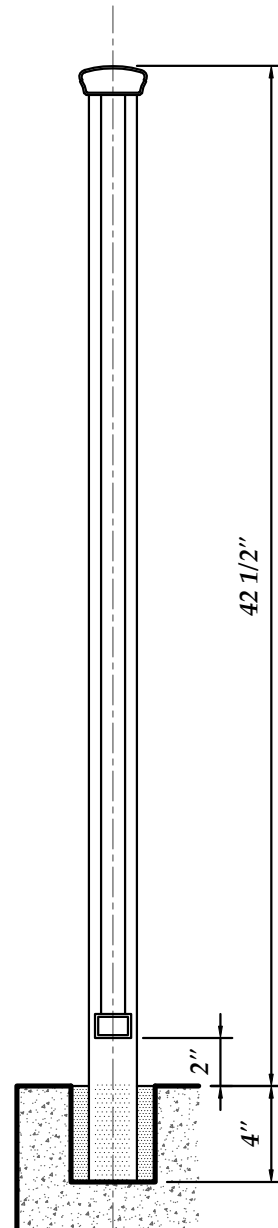


RAIL

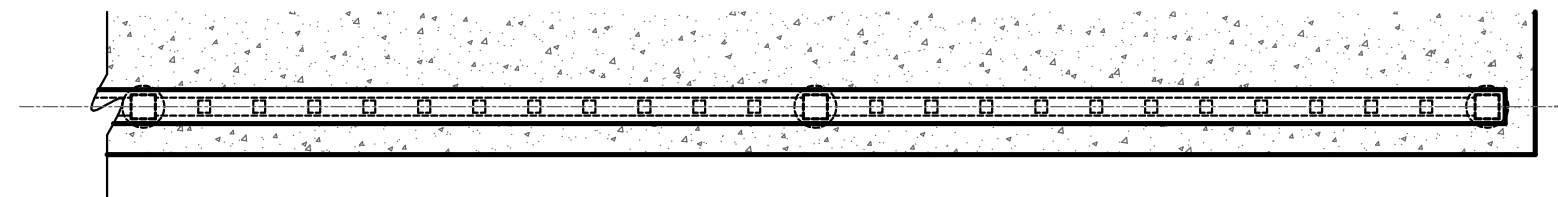
**COMPONENT DETAILS**

SCALE: 6"=1'-0"

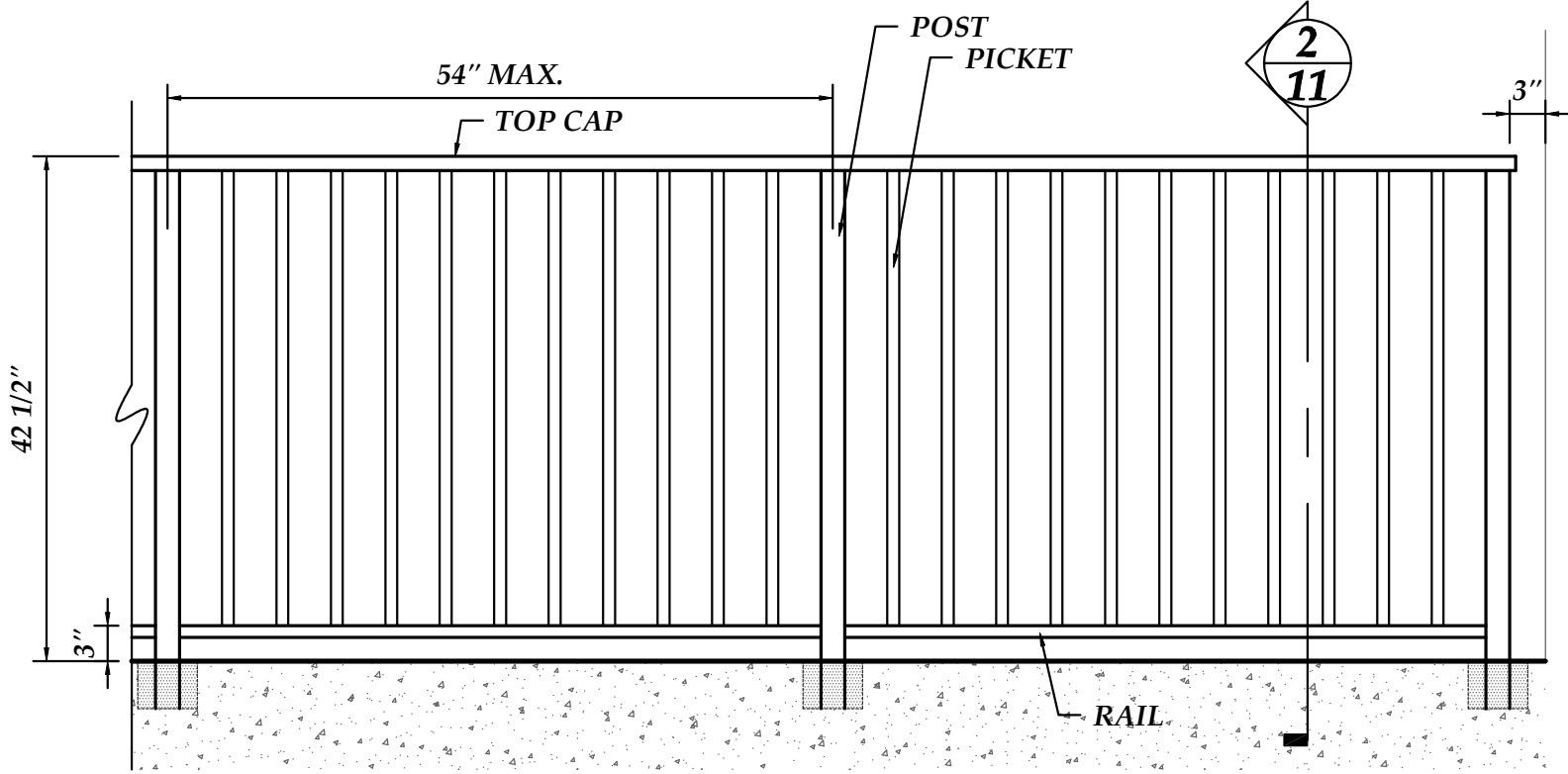
**NOTE:**  
THIS SERIES IS AVAILABLE FOR BOTH  
RESIDENTIAL APPLICATIONS AT 36" AND  
COMMERCIAL APPLICATIONS AT 42" HIGH



**2**  
**11** **GUARDRAIL SECTION**  
SCALE: 1-1/2"=1'-0"



**1**  
**11** **PLAN VIEW**  
SCALE: 3/4"=1'-0"



**1**  
**11** **GUARDRAIL ELEVATION**  
SCALE: 3/4"=1'-0"

Customer: **MULLETS ALUMINUM**

Project Name: **VRS-200**

Drawing Description: **TYPICAL DETAILS**

Date: **December 10, 2010**

Drawn By: **JRB**

Scale: **AS NOTED**

**MULLETS' ALUMINUM PRODUCTS INC.**  
WELDING FABRICATION DEPT.  
905 Ponder Ave. Office # (941) 371-3502  
Sarasota, FL 34232 Fax # (941) 378-5676

Color:

Revision:

Page:

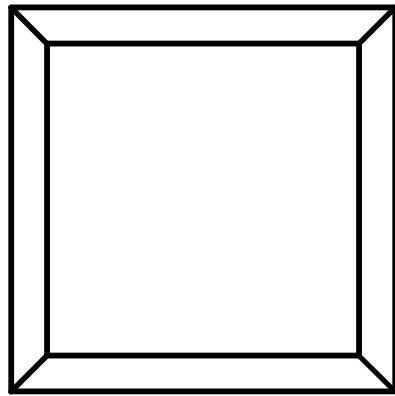
**11**

**COMPONENTS:**

4" x 4" x 3/4"	6061-T6 ALUM.	POST CAP
#133 TYPE	6063-T52 ALUM.	TOP CAP
3" x 3" x 1/8"	6061-T6 ALUM.	POST
1-1/2" x 1-1/2" x 1/16"	6061-T6 ALUM.	PICKET
1" x 1-1/2" x 1/18"	6061-T6 ALUM.	RAIL

**ALTERNATE COMPONENTS:**

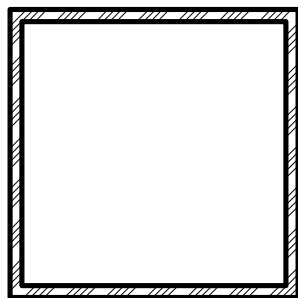
2-1/2" x 2-1/2" x 1/8"	6061-T6 ALUM.	POST
1" x 1" x 1/16"	6061-T6 ALUM.	PICKET



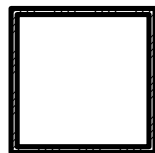
POST CAP



TOP CAP



POST



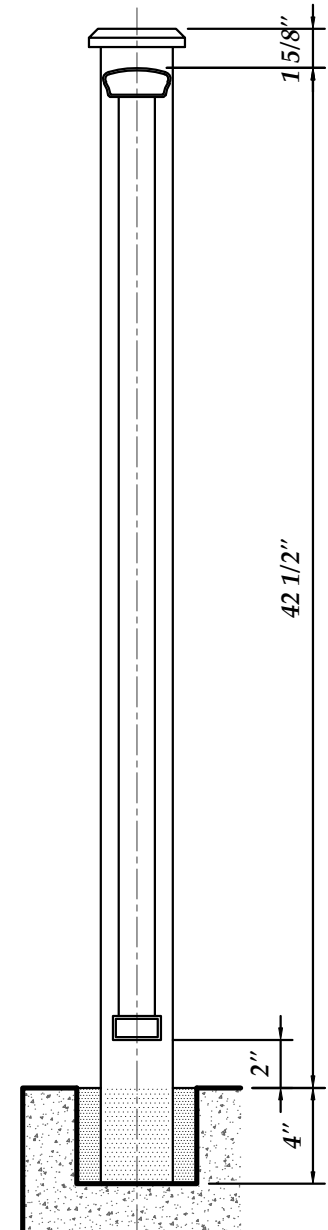
PICKET



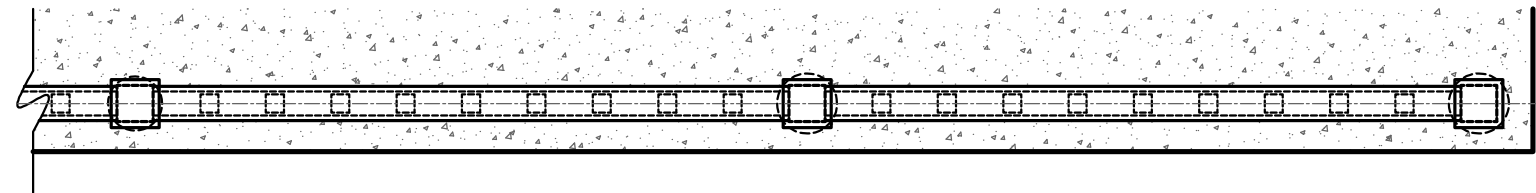
RAIL

**COMPONENT DETAILS**

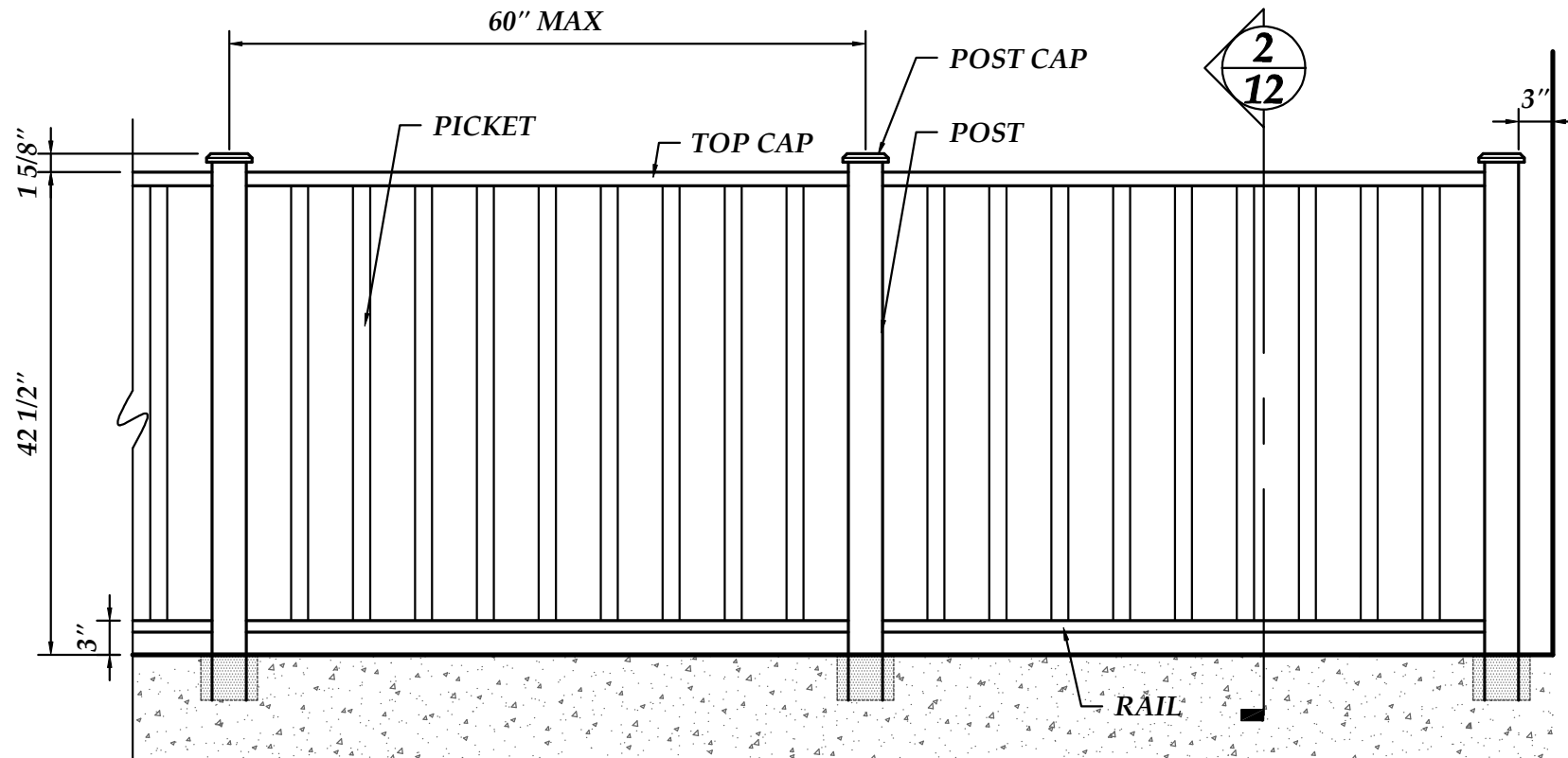
SCALE: 6"=1'-0"



**2**  
**12** **GUARDRAIL SECTION**  
SCALE: 1-1/2"=1'-0"



**1**  
**12** **PLAN VIEW**  
SCALE: 3/4"=1'-0"



**1**  
**12** **GUARDRAIL ELEVATION**  
SCALE: 3/4"=1'-0"

**NOTE:**  
THIS SERIES IS AVAILABLE FOR BOTH  
RESIDENTIAL APPLICATIONS AT 36" AND  
COMMERCIAL APPLICATIONS AT 42" HIGH

Color:

MULLETS ALUMINUM

Customer:

Date: December 10, 2010



Revision:

VRS-300

Project Name:

Drawn By: JRB

Page:

TYPICAL DETAILS

Drawing Description:

Scale: AS NOTED

12

**COMPONENTS: (RESIDENTIAL)**

#158 DIXIE	6063-T52 ALUM.	TOP CAP
1-1/2" x 3/4" x 1/8"	6061-T6 ALUM	RAIL (TOP)
1-3/4" x 1-3/4" x 1/8"	6061-T6 ALUM.	POST TAPERED
1/2" x 1/2" x 1/8"	6061-T6 ALUM.	PICKET
1-1/2" x 1" x 1/8"	6061-T6 ALUM	RAIL (BOTTOM)

**COMPONENTS:**

#158 DIXIE	6063-T52 ALUM.	TOP CAP
1-1/2" x 3/4" x 1/8"	6061-T6 ALUM	RAIL (TOP)
1-3/4" x 1-3/4" x 1/8"	6061-T6 ALUM.	POST TAPERED
3/4" x 3/4" x 1/8"	6061-T6 ALUM.	PICKET
1-1/2" x 1" x 1/8"	6061-T6 ALUM	RAIL (BOTTOM)

**ALTERNATE COMPONENTS:**

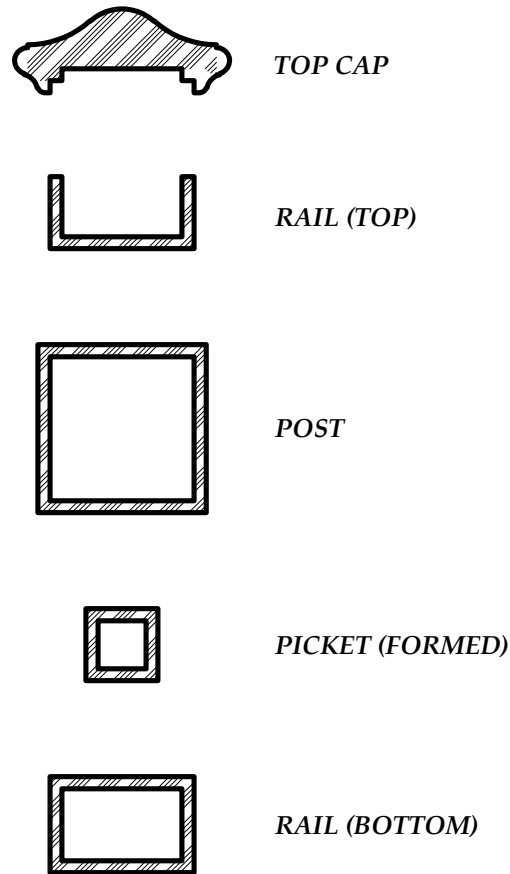
1/2" x 1/2" TWIST 6061-T6 ALUM. BAR PICKET

**ALTERNATE COMPONENTS:**

3/4" x 3/4" TWIST 6061-T6 ALUM. BAR PICKET

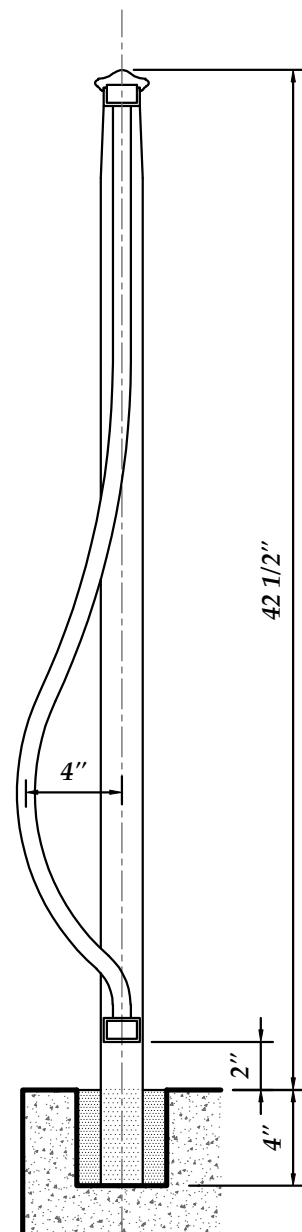
**COMPONENT DETAILS (REIDENTIAL)**

SCALE: 6"=1'-0"

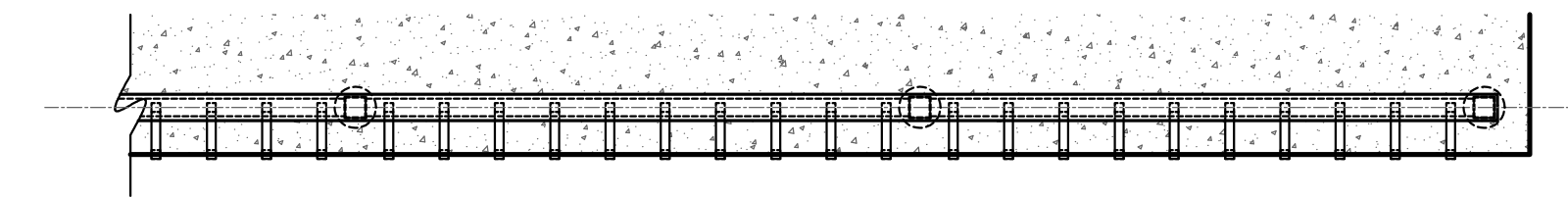


**COMPONENT DETAILS**

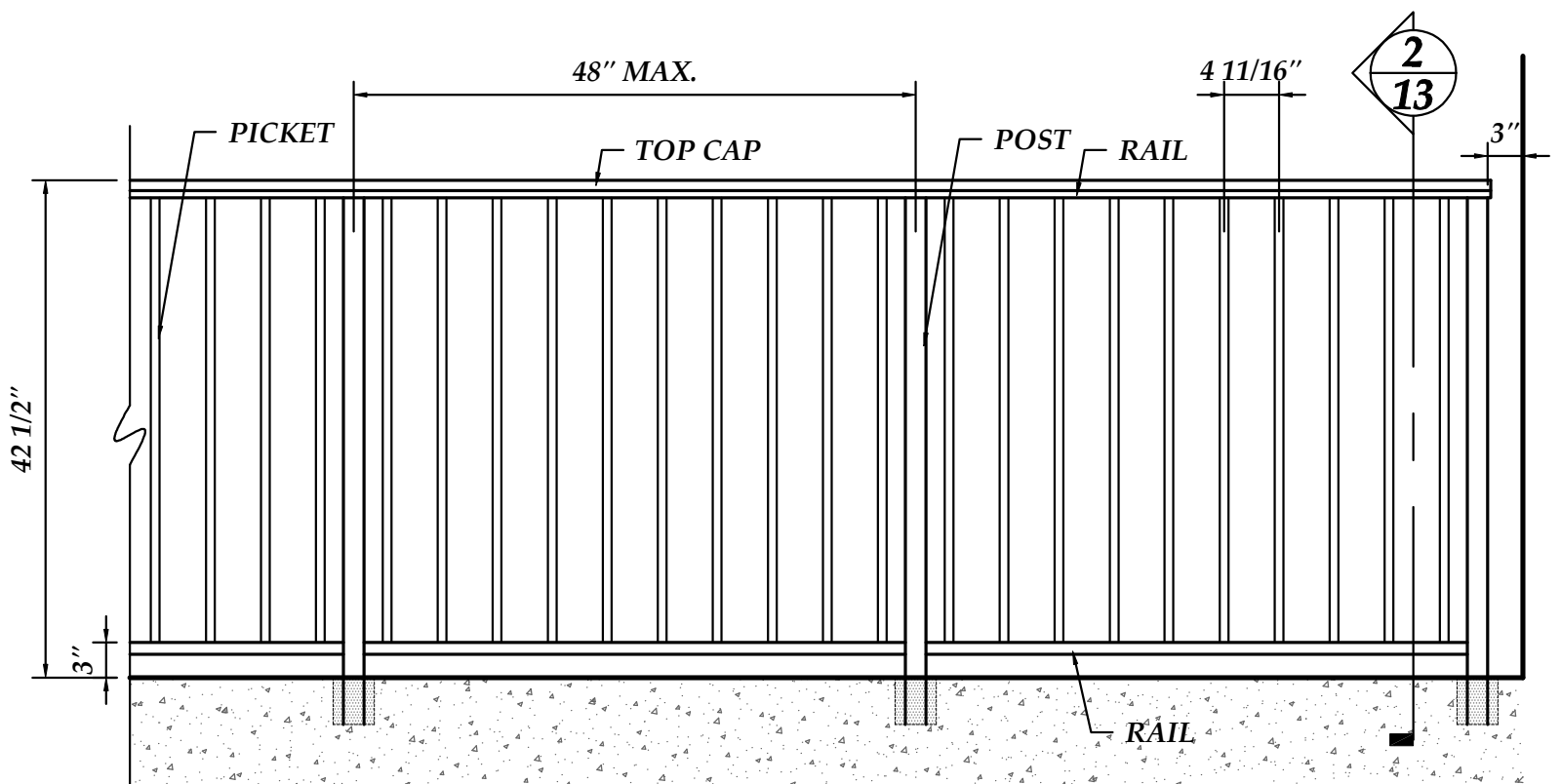
SCALE: 6"=1'-0"



**2**  
**13** **GUARDRAIL SECTION**  
SCALE: 1-1/2"=1'-0"



**1**  
**13** **PLAN VIEW**  
SCALE: 3/4"=1'-0"



**1**  
**13** **GUARDRAIL ELEVATION**  
SCALE: 3/4"=1'-0"

Color:

MULLETS ALUMINUM

Customer:

Date: December 10, 2010



Revision:

VRS-400

Project Name:

Drawn By: JRB

WELDING FABRICATION DEPT.  
905 Ponder Ave. Office # (941) 371-3502  
Sarasota, FL 34232 Fax # (941) 378-5676

Page:

TYPICAL DETAILS

Scale: AS NOTED

**COMPONENTS:**

#158 DIXIE	6063-T52 ALUM.	TOP CAP
1-1/2" x 3/4" x 1/8"	6061-T6 ALUM	RAIL (TOP)
1/2" x 1/4" - SOLID	6061-T6 ALUM.	SCROLL
1-1/2" x 3/4" x 1/8"	6061-T6 ALUM.	POST
1/2" x 1/2" - SOLID	6061-T6 ALUM.	PICKET
1-1/2" x 1-3/4" - LATHED	6061-T6 ALUM.	COLLAR
1-1/2" x 3/4" x 1/8"	6061-T6 ALUM	RAIL (BOTTOM)

**ALTERNATE COMPONENTS:**

1/2" x 1/2" - SOLID	6061-T6 ALUM.	TWISTED PICKET
---------------------	---------------	----------------



TOP CAP



RAIL (TOP)



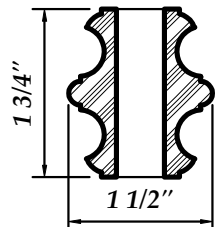
SCROLL



POST



PICKET



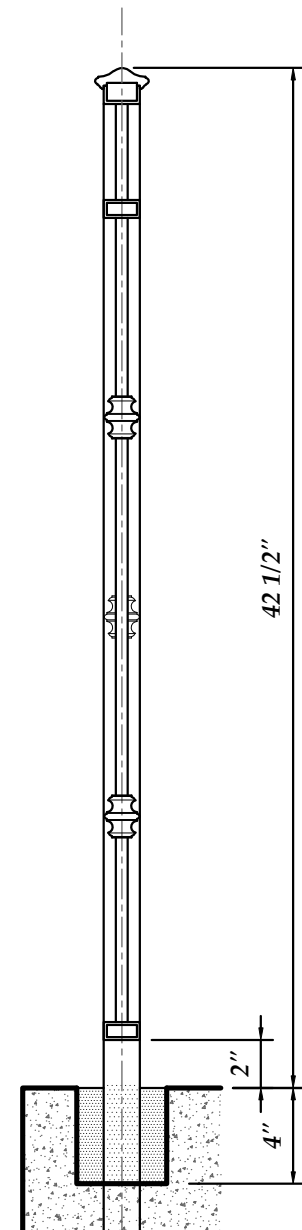
COLLAR



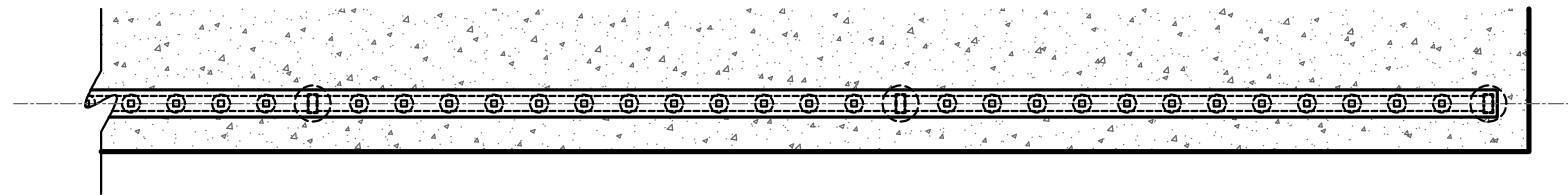
RAIL (BOTTOM)

**COMPONENT DETAILS**

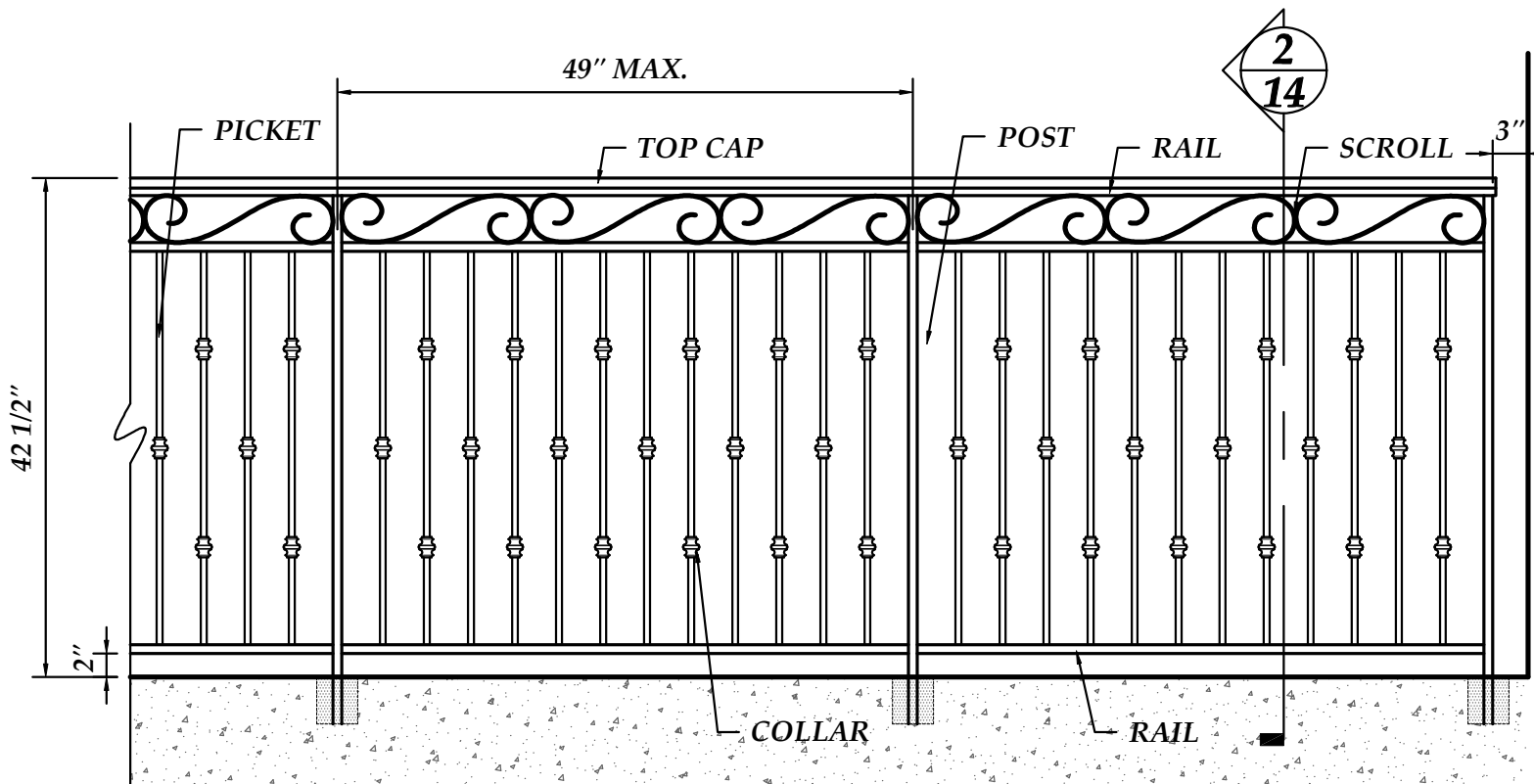
SCALE: 6"=1'-0"



**2**  
**14** **GUARDRAIL SECTION**  
SCALE: 1-1/2"=1'-0"



**1**  
**14** **PLAN VIEW**  
SCALE: 3/4"=1'-0"

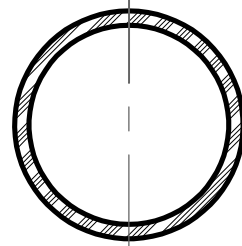


**1**  
**14** **GUARDRAIL ELEVATION**  
SCALE: 3/4"=1'-0"

**NOTE:**  
THIS SERIES IS AVAILABLE FOR BOTH  
RESIDENTIAL APPLICATIONS AT 36" AND  
COMMERCIAL APPLICATIONS AT 42" HIGH

Color:	Revision:	Page:
MULLETS ALUMINUM	VRS-500	14
Customer:	Project Name:	Drawing Description:
December 10, 2010	JRB	TYPICAL DETAILS
Date:	Drawn By:	Scale:
AS NOTED	AS NOTED	AS NOTED

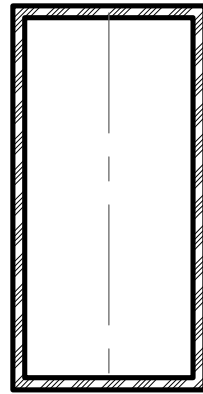
**MULLETS' ALUMINUM PRODUCTS INC.**  
WELDING FABRICATION DEPT.  
905 Ponder Ave. Office # (941) 371-3502  
Sarasota, FL. 34232 Fax # (941) 378-5676



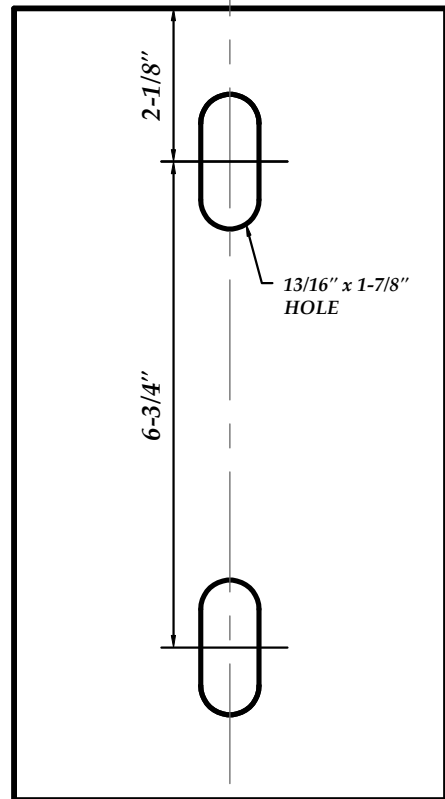
RAIL



PICKET



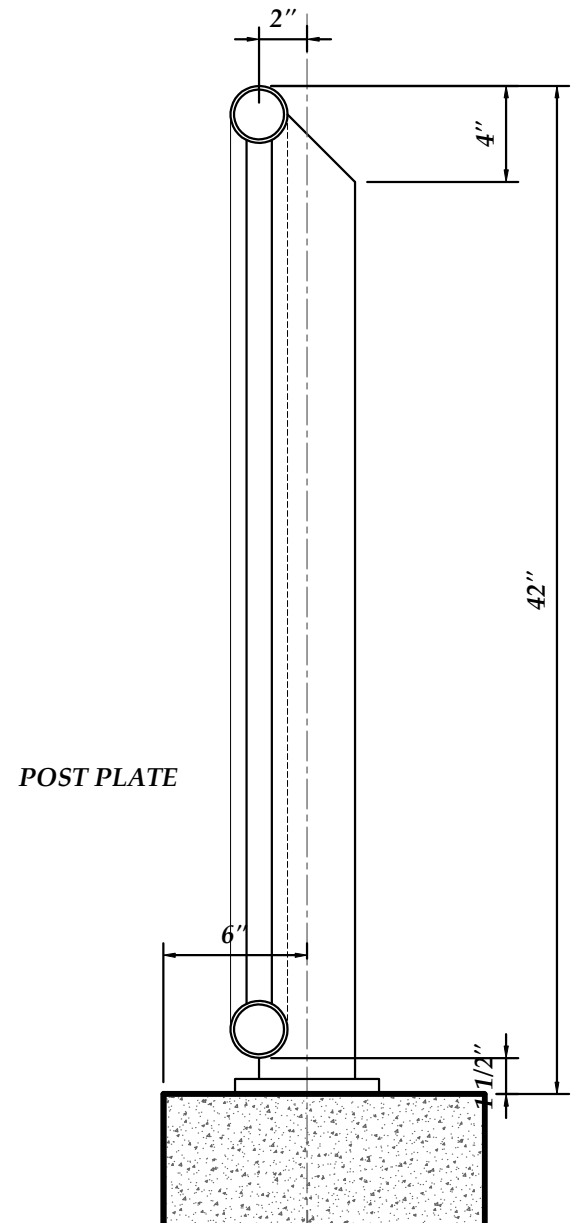
POST



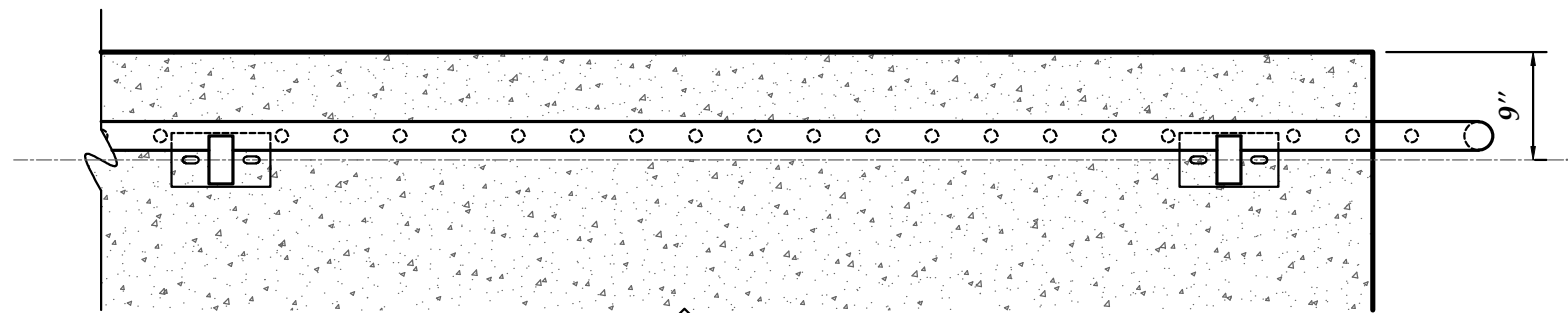
**COMPONENT DETAILS**  
SCALE: 6"=1'-0"

**COMPONENTS:**

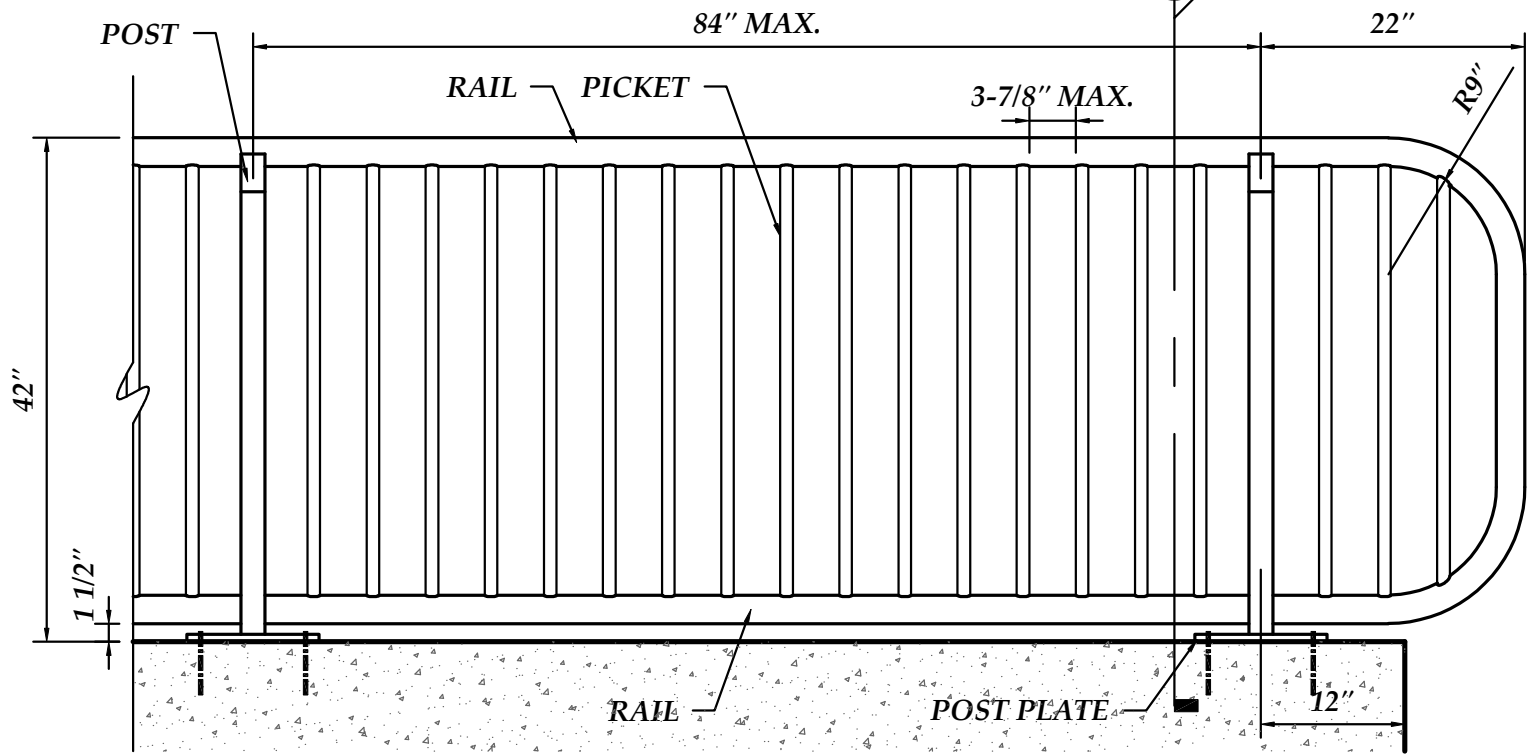
2" NPS SCH. 40	6061-T6 ALUM	RAIL
1/2" NPS SCH. 40	6061-T6 ALUM.	PICKET
2" x 4" x 1/8"	6061-T6 ALUM.	POST
6" x 11" x 5/8"	6061-T6 ALUM.	POST BASE



**2 GUARDRAIL SECTION**  
SCALE: 1-1/2"=1'-0"



**1 PLAN VIEW**  
SCALE: 3/4"=1'-0"



**1 GUARDRAIL ELEVATION**  
SCALE: 3/4"=1'-0"

Color: **MULLETS ALUMINUM**

Revision: **DOT-860**

Page: **15**

Date: **December 10, 2010**

Drawn By: **JRB**

Scale: **AS NOTED**

**MULLETS' ALUMINUM PRODUCTS INC.**  
WELDING FABRICATION DEPT.  
905 Ponder Ave. Office # (941) 371-3502  
Sarasota, FL 34232 Fax # (941) 378-5676

**TYPICAL DETAILS**

**COMPONENTS:**

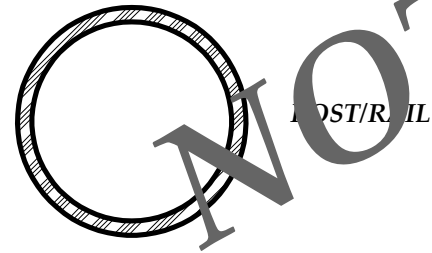
2" NPS SCH. 40

6061-T6 ALUM

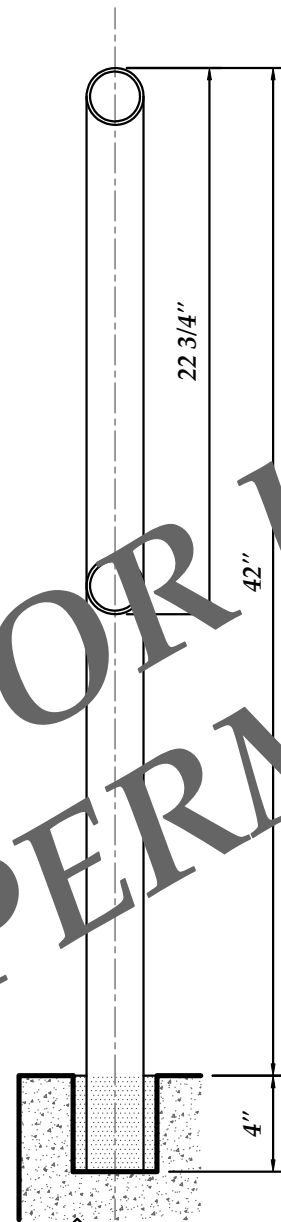
POST / RAIL

**COMPONENT DETAILS**

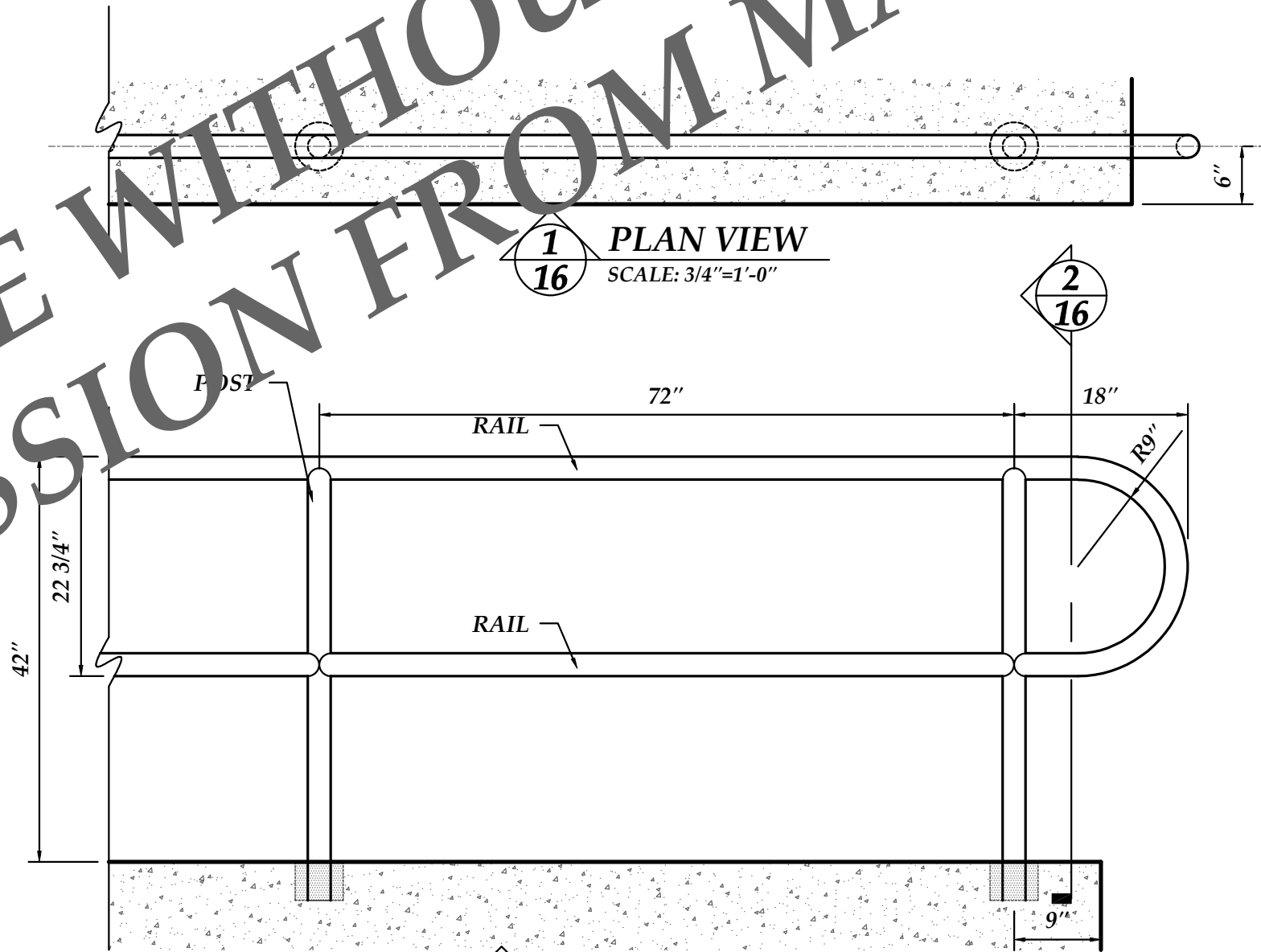
SCALE: 6"=1'-0"



POST/RAIL



**2**  
**16** GUARDRAIL SECTION  
SCALE: 1-1/2"=1'-0"



**1**  
**16** GUARDRAIL ELEVATION  
SCALE: 3/4"=1'-0"

**1**  
**16** PLAN VIEW  
SCALE: 3/4"=1'-0"

NOT FOR USE WITHOUT EXPRESS PERMISSION FROM MAPI

Customer: **MULLETS ALUMINUM**

Project Name: **DOT-870**

Drawing Description: **TYPICAL DETAILS**

Date: **December 10, 2010**

Drawn By: **JRB**

Scale: **AS NOTED**

Color:

Revision:

Page:

**16**

**MULLETS' ALUMINUM PRODUCTS INC.**  
WELDING FABRICATION DEPT.  
905 Ponder Ave. Office # (941) 371-3502  
Sarasota, FL 34232 Fax # (941) 378-5676