

COMPONENTS:

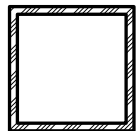
1"x2"x1/8" (RADIUS)	6061-T6 ALUM.	TOP CAP
2"x2"x1/8"	6061-T6 ALUM.	POST
3/4"x1.5"x1/8"	6061-T6 ALUM.	PICKET

ALTERNATE COMPONENTS:

1"x1"x1/8"	6061-T6 ALUM. ROTATED 45°	PICKET
#133 TYPE	6063-T52 ALUM.	TOP CAP



TOP CAP



POST

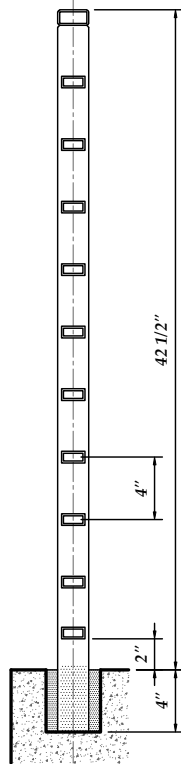


PICKET

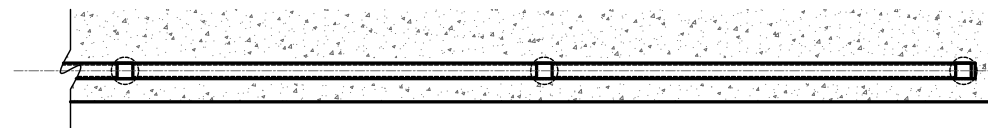
COMPONENT DETAILS

SCALE: 6"=1'-0"

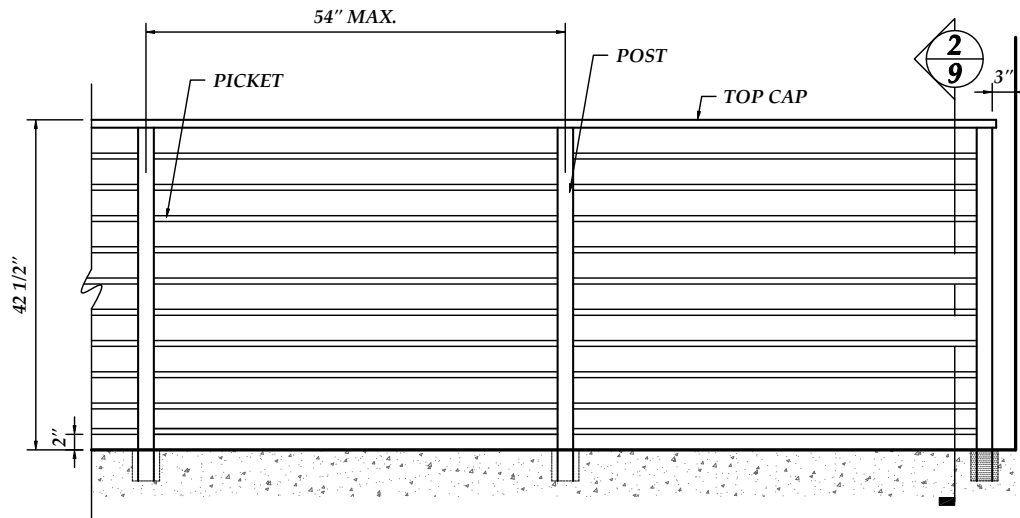
NOTE:
THIS SERIES IS AVAILABLE FOR BOTH
RESIDENTIAL APPLICATIONS AT 36" AND
COMMERCIAL APPLICATIONS AT 42" HIGH



2
9 **GUARDRAIL SECTION**
SCALE: 1-1/2"=1'-0"



1
9 **PLAN VIEW**
SCALE: 3/4"=1'-0"



1
9 **GUARDRAIL ELEVATION**
SCALE: 3/4"=1'-0"

<p>MULLETT'S ALUMINUM PRODUCTS INC. WELDING FABRICATION DEPT. 905 Ponder Ave. Sarasota, FL 34232 Office # (941) 371-3502 Fax # (941) 378-5676</p>	Date: December 10, 2010	Customer: MULLETT'S ALUMINUM	Color:
	Drawn By: JRB	Project Name: HRS-400	Revision:
	Scale: AS NOTED	Drawing Description: TYPICAL DETAILS	Page: 9