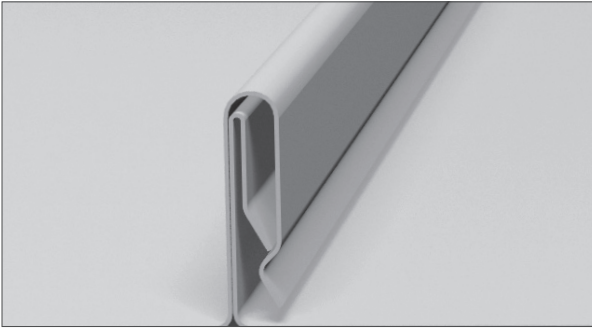


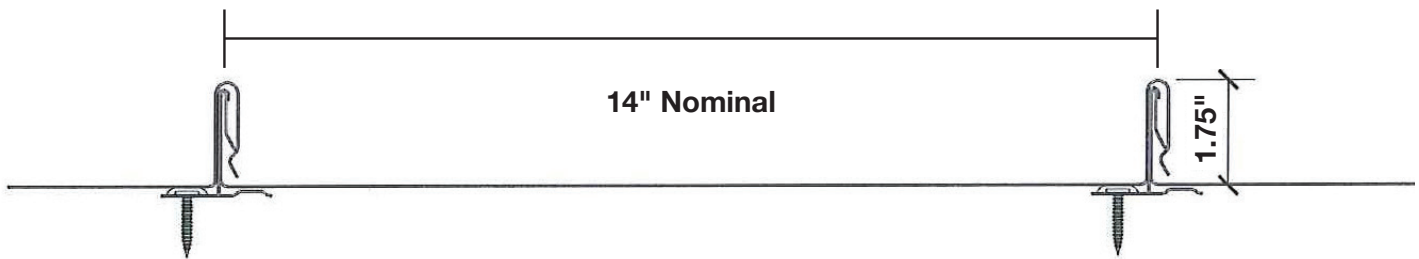
MAPI Standing Seam 1.75" Snap Lock Panel



Product Description:

- Structural Standing Seam Metal Roofing System
- Commercial profile for multiple deck and slope applications
- Combines optimum performance with excellent value
- Specially designed clip allows thermal movement
- Tested panel for rated assemblies achieves higher performance levels

1.75" Snap Lock Panel • Max width 14", Snap Lock Seam fastened with (2) #12/14 Quadrex drive pancake head, self tapping screws • One Part Clip Assembly SL175R Clip fastening metal to panel through Dens Deck Sheathing & Insulation to underlying Steel Decking or open framing • Maximum 24" clip spacing • Design Pressure – 138.5 psf. • Panel Rollformer: Schleich Quadro-Plus Rollformer • Oil Canning is a characteristic of light gauge architectural metals and is not a flaw and therefore is not a cause for rejection.



Design information:

- Minimum Slope = 2:12
- Actual Panel Width: 14" from 24" Coil
- Solid Substrate 19/32" Plywood or Greater
- Structural, Hydrostatic Panel
- Snap Seam - No Field Seaming Required
- 24 Gauge Galvalume Plus
- .032 & .040 Aluminum
- 30 Year Finish Warranty on Kynar 500 Finish
- Weather Tight Warranty Available
- Underlayment Required with Solid Substrate

Test Report Summary:

- Miami Dade Building Code Compliance Approved
- Florida Building Code 2023
- Chapter 15: Roof Assemblies
- Section 1504.3.2; 1505.3; 1507.4
- Chapter 16: Structural Design
- Chapter 22: Steel; Section 2209 Cold Form Steel
- Chapter 23: Wood
- Testing per TAS 125-03 Std. Requirements for Metal Roof Systems
- Test Assembly #6 by Underwriters Laboratory for:
 - a) UL 580-94, per FBC, Uplift Resistance of Roof Assemblies
 - b) UL 1897-98, per FBC, Uplift Tests for Roof Covering Systems
- Testing per TAS 100 Wind Driven Rain Test
- Florida Product Approval - 46113
- Florida Product Approval - 46115
- Member of Sentrigard Metal Roofing Systems Associations, Inc. a NB Handy Company